



LEHIGH
UNIVERSITY



RHIC/AGS Users' Executive Committee Activities 2017-19

**Rosi Reed
RHIC/AGS UEC Outgoing Chair
RHIC S&T Review**

RHIC/AGS Users → UEC

- Elected Users' Executive Committee composed of 19 + 4 ex-officio members present the interests of ~**2000** people
 - ~**1100** RHIC Experimental Physicists (STAR/PHENIX/sPHENIX)
 - Accelerator Scientists: ~**750**
 - ~**150** Theorists in users DB for conference or BNL Computing
- RHIC collaborations can address some issues as well, however it can be useful to have someone outside the collaboration structure to address user issues
 - Our role can be important to the other groups such as the accelerator scientists and theorists who do not have a collaboration
- **Good lab support** - BNL GUV Center provides dedicated staff: Kelly Guiffreda, Director Kathy Nasta, Teri Lazar etc. assisting in all activities
 - **This support is absolutely vital!**

RHIC/AGS UEC Membership

• Sevil Salur	Chair	Rutgers University
• Ron Belmont	Chair Elect	University of North Carolina at Greensboro
• Rosi Reed	Past Chair	Lehigh University
• Megan Connors	Member	Georgia State University
• Shinichi Esumi	Member	University of Tsukuba 1
• Oleg Eyser	Member	Brookhaven National Laboratory
• Justin Frantz	Member	Ohio University
• Tony Frawley	Member	Florida State University
• Frank Geurts	Member	Rice University
• Xuan Li	Member	Los Alamos National Laboratory
• Jaki Noronha-Hostler	Member	University of Illinois at Urbana-Champaign
• Ralf Seidl	Member	RIKEN
• Yacine Mehtar-Tani	Appointed Member	Brookhaven National Laboratory
• Peter Petreczky	Appointed Member	Brookhaven National Laboratory
• Amilkar Quintero	Appointed Member	Temple University
• Zhenyu Ye	Appointed Member	University of Illinois @ Chicago
• Doon Gibbs	Ex-Officio Member	Brookhaven National Laboratory
• Hong Ma	Ex-Officio Member	Brookhaven National Laboratory
• Berndt Mueller	Ex-Officio Member	Brookhaven National Laboratory
• Thomas Roser	Ex-Officio Member	Brookhaven National Laboratory
• Ajeeta Khatiwada	Student/Post-doc	Los Alamos National Laboratory
• Prashanth Shanmuganathan	Student/Post-doc	Brookhaven National Laboratory
• Matthew Sievert	Student/Post-doc	University of Illinois at Urbana-Champaign

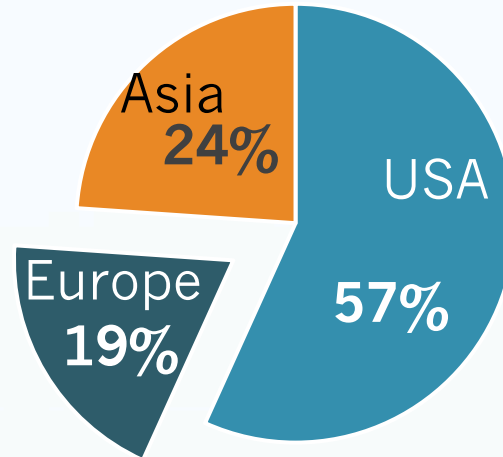
UEC Groups and Members

- **3 concurrent chairs:** chair-elect, current chair, outgoing chair
- 16 Regular Members + 3 Student/Postdoc Members
 - 5 women, 4 theorists, 4 spin people, 5 URM, 6 BNL/LANL
- **Working groups**
 - Meetings, Communications, Outreach
 - Quality of Life
 - Funding, Politics & Programmatics
 - Site Access & Science
 - Diversity
- **Main functions:**
 - Organizing Annual Users Meeting (AUM) and Open Forum meeting
 - Advocate for user issues as they arise
 - DC Nuclear Physics Outreach Day
 - Thesis, Merit Awards
 - Nominations for DNP/APS committees & Awards

Who We Represent

FY 2018 RHIC Users by Institutional Location

Some user institutions are located in South America and Africa but number too small to represent here.



Activities

- **UEC meets each Month**
 - 2nd Friday of the month at 2 pm
 - Discuss issues of concern for RHIC/AGS users
 - Plan events such as the AUM
 - Occasional visitors for important discussions
 - Last week Manager of Facilities & Operation (F&O)'s Integrated Facility Management Division (IFM) Mark Davis
 - Past visitors include Deputy Director for Science and Technology Robert Tribble, Associate Laboratory Director for Nuclear & Particle Physics Berndt Mueller, Laboratory Director Doon Gibbs
- Website: <http://www.rhicuec.org/>
 - Meeting materials available at: <http://www.rhicuec.org/events.aspx>
- **Meetings with management facilitate UEC-Lab Communication**
 - Bi-Monthly meetings w/ Meeting with Associate Laboratory Director, Facilities & Operations Tom Daniels & Director of the Facilities Division Martin Fallier
 - Includes all BNL UECs

Meetings – Open Forum @ DNP

- Most important traditional UEC function: Meetings/Outreach
- Open Forum allows scientifically valuable conversations, updates on new proposals (EIC for example)

2017 - Pittsburgh

WHERE Pittsburgh, PA
Pittsburgh Marriott "City Center"
Salon 2 Grand Ballroom

**RHIC & AGS Users' Group
Open Forum Meeting and Reception**

TIME Reception begins at 6:30 p.m.

DATE Thursday, October 26, 2017

GUEST SPEAKERS
Isaac Upsal (Ohio State University)
Jim Drachenberg (Lamar University)

AGENDA
Open Forum: Individual Contributions
Please send contributions to Rosi Reed: rjr215@lehigh.edu

Indico: <https://indico.bnl.gov/conferenceDisplay.py?confid=3714>
Reception provided courtesy of Brookhaven Science Associates
Contact: Rosi Reed, RHIC/AGS Users' Executive Committee — rjr215@lehigh.edu

2018 - Hawaii

WHERE Waikoloa, Hawaii
Hilton Waikoloa Village
Kohala 3

**RHIC & AGS Users' Group
Open Forum Meeting and Reception**

TIME Light Refreshments at 1:00 p.m.

DATE Thursday, October 25, 2018

GUEST SPEAKER
Abhay Deshpande: Brookhaven National Lab/Stony Brook University

AGENDA
"Understanding the glue that binds us all:
The Science of the Future EIC for the DNP"

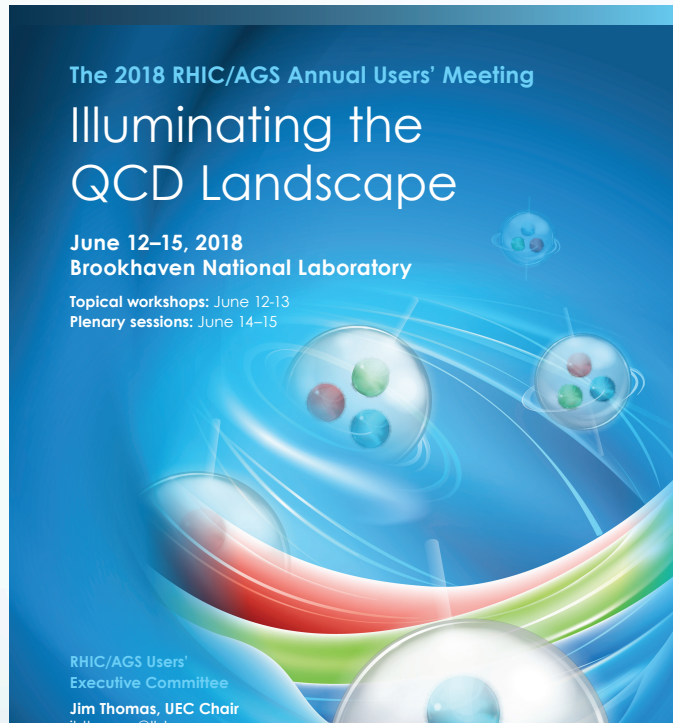
Indico: <https://indico.bnl.gov/event/5053/>
Reception provided courtesy of Brookhaven Science Associates
Contact: Sevil Salur, RHIC/AGS Users' Executive Committee — salur@physics.rutgers.edu

2019 – Tuesday
October 15th
Crystal City

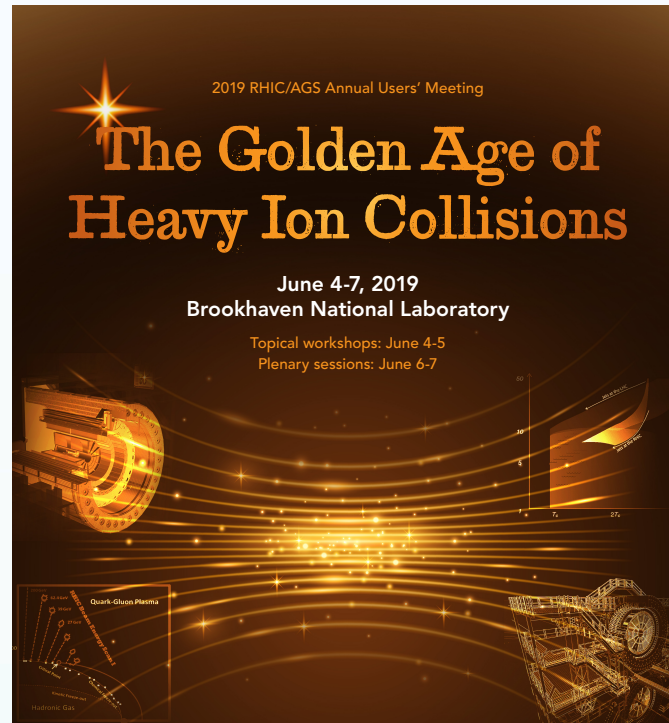
Coming Soon!!

2018 - 2020 User Meetings

2018



2019



2020 AUM
will have the
theme “20
years of
RHIC”

June 9 - 12

2019



2018/19 User Meetings

- 2018 AUM - Illuminating the QCD Landscape
 - Parallel Sessions: Beam Energy Scan, Spin and Forward Physics, Jets, Heavy Flavor, Small Systems
 - Included a very popular Diversity + Career Development session
 - Plenary sessions – Report from funding agencies, RHIC upgrades and running, JETSCAPE+BEST theory collaborations
- 2019 AUM - The Golden Age of Heavy Ion Collisions
 - Parallel Sessions: Heavy Flavor, Beam Energy Scan, cold QCD, Small Systems, High p_T /Jets
 - Continued Diversity + Career Development session
 - Plenary sessions – Report from funding agencies, RHIC upgrades and running, tribute for Roy Glauber
- Large attendance – 2017, 186 registrants – 2018, 185 registrants – 2019, 206 registrants

Funding, Politics – DC Day

- Website: <http://nuclearphysicsdcdays.com/>
- Dates: Monday, March 11 2019, April 9, 2018, May 22, 2017
- RHIC users join with FRIB and JLAB to inform congress about the needs of the nuclear physics community
 - Includes meetings with DOE/NSF program managers
- Informative handouts - <http://nuclearphysicsdcdays.com/handouts/>
- Participation:
 - 2019: 29 RHIC/AGS Users with 97 total
 - 2018: 35 RHIC/AGS Users with 105 total
 - 2017: 31 RHIC/AGS Users with ~100 total
 - 2016: 27 RHIC/AGS Users with 75 total
 - 2015: 25 RHIC/AGS Users with 62 total
- Collecting non-government email address for interested participants: http://www.listservers.net/mailman/listinfo/rhic-complex-users_listservers.net
- Sign up if you are interested!

Quality of Life – Food Services

- Food vendor change August 2019 from Metz Inc to New York State Commission for the Blind (via Virtual Hospitality Group → operates food service for government agencies and private industry)
- Organization seems to be responsive
 - Decreased use of disposables
 - Earlier breakfast time to accommodate shift-takers and other early risers
- Other food options at BNL
 - Starbucks building 400 - Opened 1/1/08
 - Micro Market building 400 - Opened 10/1/15
 - Micro Market building 740 - Opened 3/1/17

Quality of Life – Food Services

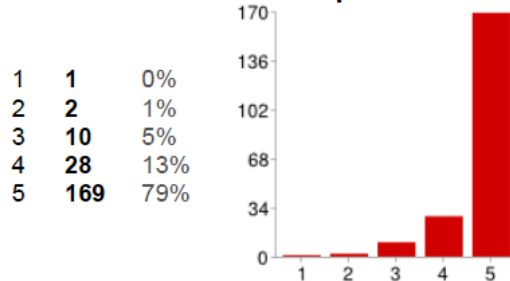
- **Only** dinner/evening food options closed in Spring 2015 (Brookhaven Center)
 - Users want a place for evening food/meeting space!
 - Micro-market does provide limited food that users without cars can grab
 - Weekends can be difficult for users without cars
- UEC User surveys issues
 - Food quality/service
 - Address needs of diverse customer base
 - Availability at wider hours

Food Services Survey

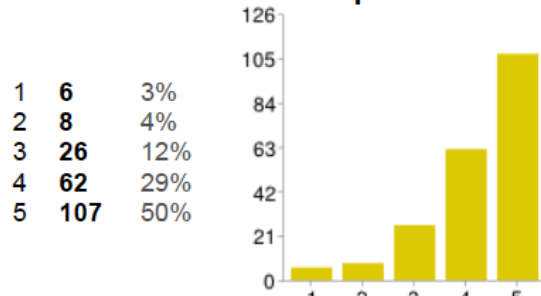
(2014)

Users believe Brookhaven should have:

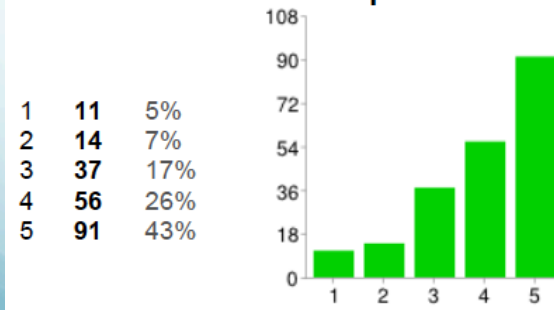
on-site **DAYTIME** food options



on-site **EVENING** food options



on-site **WEEKEND** food options



- Most common question UEC chairs receive is regarding the ability to get (hot) food at BNL in the evening
 - Important for collaboration especially for visiting science/lab employee interactions
 - Leaving BNL increases time away from the experiment → decreases productivity
- Other UEC chairs also express an interest for their communities!
- The UEC believes we can find a solution that works

5 = strongly agree, 4 = agree, 3 = neutral, 2 = disagree, 1 = strongly disagree

Quality of Life – Dorms

- Decaying Physical Infrastructure – 70-yr old Buildings @ End of Life
 - Decreased beds in last ~12 yrs sometimes not enough space in the summer
 - Summer 2019 had a higher than normal # of summer students → Created additional demand
 - Apartments vs dorms
- Discovery Park Project
 - Dorms, conference facilities, etc just outside Main Gate Lab using a public shared use model
 - https://www.bnl.gov/aum2019/content/plenary/pdf/marty_fallier.pdf
- User community concerns:
 - Price
 - Rate Controlled Availability
 - Long-term (Detector Experts) vs short-term needs

Quality of Life – Day Care + Gas

- Daycare availability is a concern
 - BNL Daycare facility closed in April 2017
 - Building + Playground are there but overgrown
 - Visiting scientists may have difficulty with getting short term contracts at local facilities
 - Possibility of hiring short term care from existing vendors to cover meetings where demand may be higher?
 - Potential for daycare at Discovery Park is great, but still some years away
- BNL gas station closed Jan 2018
 - Affects local users more → Decrease in Quality of Life

Site Access & Science

- Visas from certain countries are increasingly delayed which complicates efficient planning
- Difficulties with approval to be on-site have:
 - Complicated coverage of experimental shifts
 - Complicated oversight of production at sPHENIX
 - Collaboration becomes more cumbersome, decreases the probability that BNL (or other national lab) is chosen as a conference venue
- These uncertainties are a concern for users, especially young scientists
- Clarity to the User community on what actions are allowed would be useful as effective and efficient planning requires this so resources are effectively allocated
 - Example – if a CV is required what should it contain?
 - Meetings approved as Public Events (open meetings) allow anyone to come on site, regardless of nationality or institution

Diversity

- Diversity WG is the newest working group at the UEC
 - Partially a reaction to 2015/2010 STAR/PHENIX/BNL “Site visits” by APS Committee on the Status of Women in Physics
- Data is being gathered on the diversity of the User base – it can be complicated to get statistics regarding gender and other aspects so need to solve how to present
- Lactation rooms are now available at BNL!
- New series on career development and diversity are very popular at the Users’ Meetings
- Activities in the Diversity WG have expanded on topics beyond women in physics, such as
 - LGBTQ+
 - Race
 - Culture

Summary

- RHIC/AGS UEC Activities include
 - Outreach
 - User infrastructure at Lab
 - Diversity
 - Understanding Users needs that can impact the science mission of RHIC
- Communication between UEC/Lab management on many issues is generally good – **Meetings with management are especially useful**
- BNL/RHIC Support of UEC activities has been also been generally good
- Discovery Park will be key to the future of the lab → vital to continue consultation with User groups
 - However Users would like to see some services return to BNL in the interim years
- UEC is working on better communication with our user base → We are happy to act as an information transit