

# Run13 Availability...

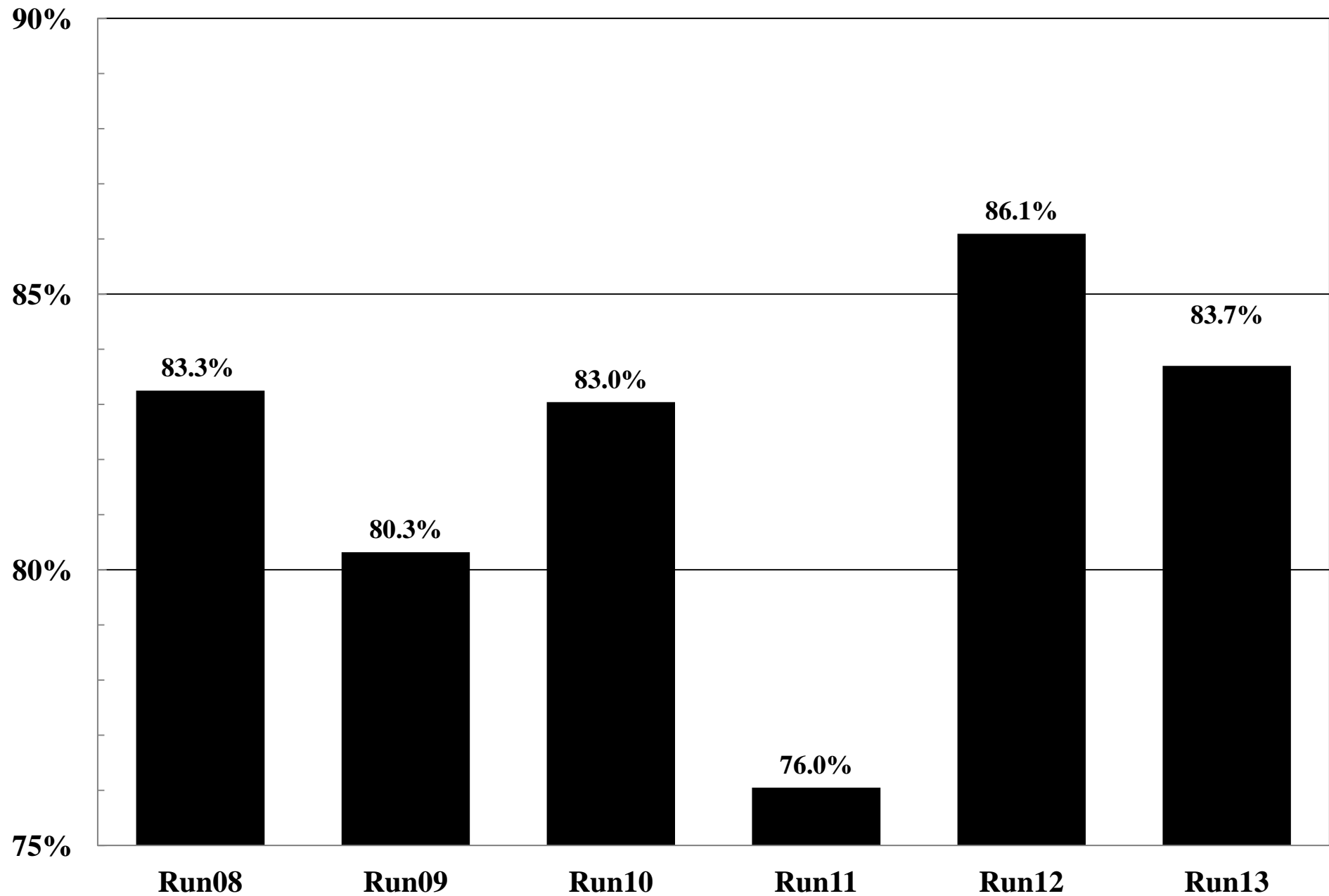
RHIC Retreat July 26, 2013

P. Ingrassia

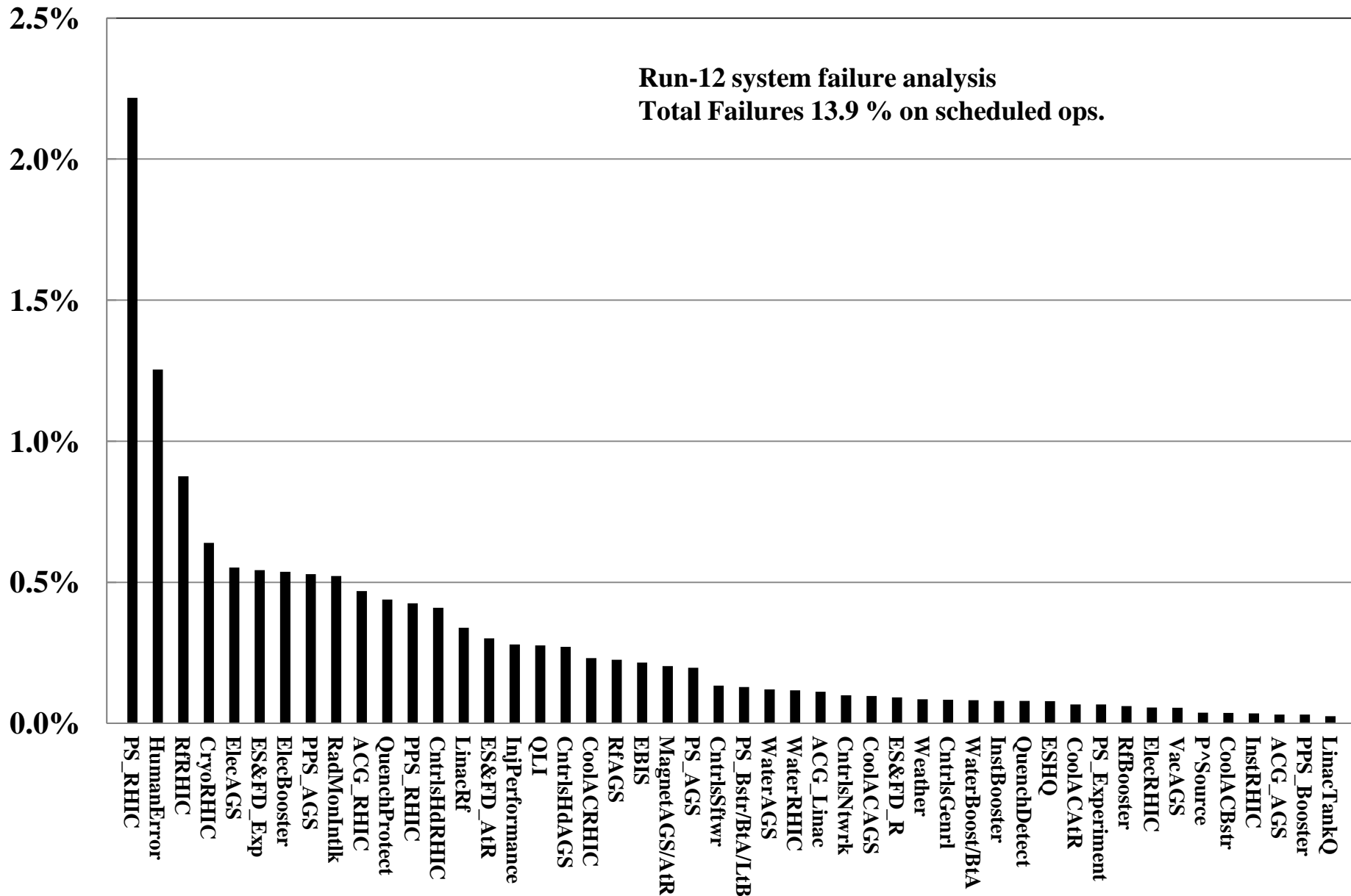
# Notes – the usual disclaimer

- “Scheduled Hours” = sum of [**physics + development + apex + machine setup + experimenter setup + failure**] hours
  - maintenance and shutdown are not “scheduled (running) hours”
- Failures normalized by Scheduled Hours for the run in question.
- Failure Hour charts by system e.g. RHIC\_Rf  
NOT group {RHIC\_Rf, AGS\_Rf, Booster\_Rf}

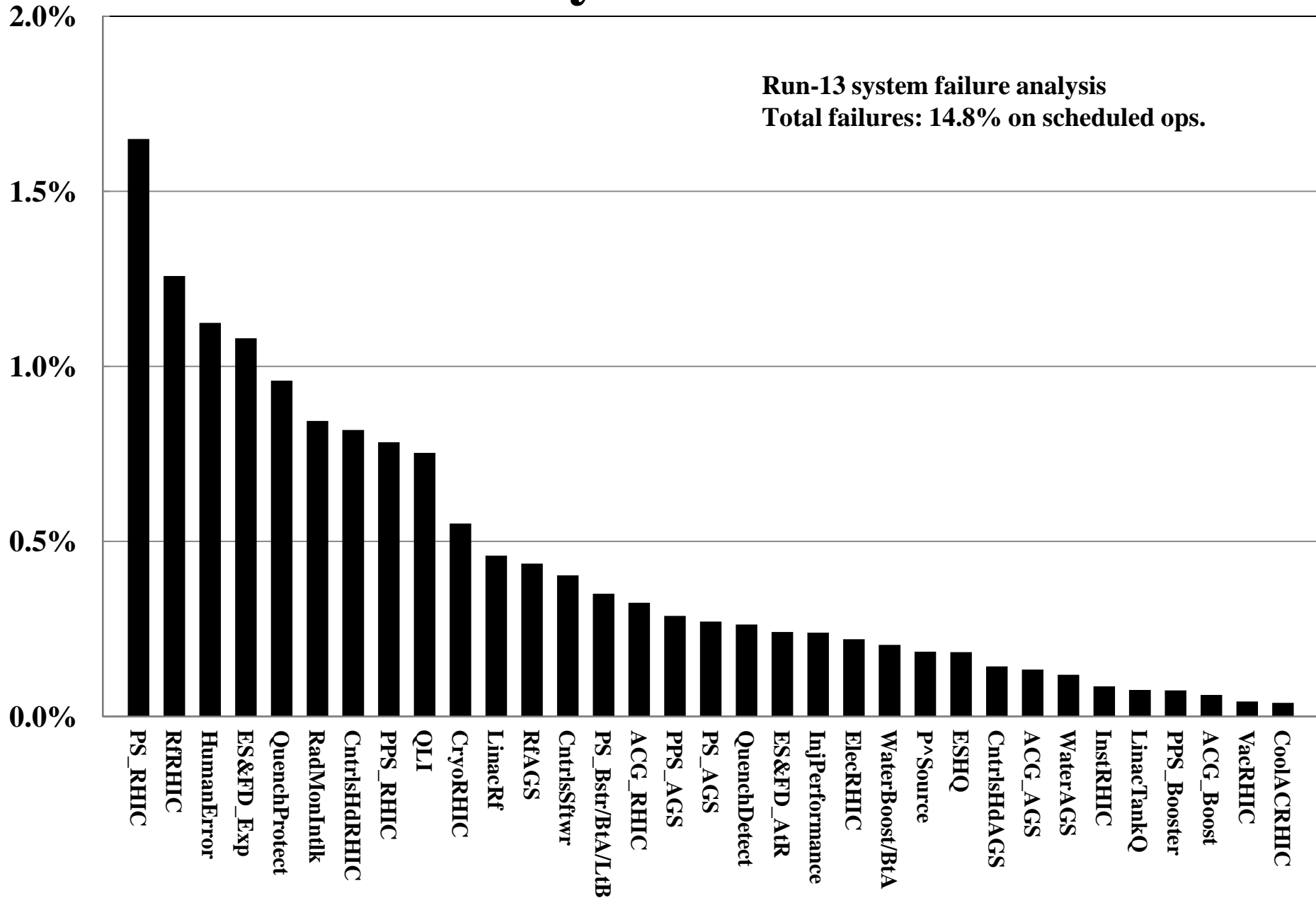
# Availability Run08 - Run13



# Run12 System Failure > 1 hr

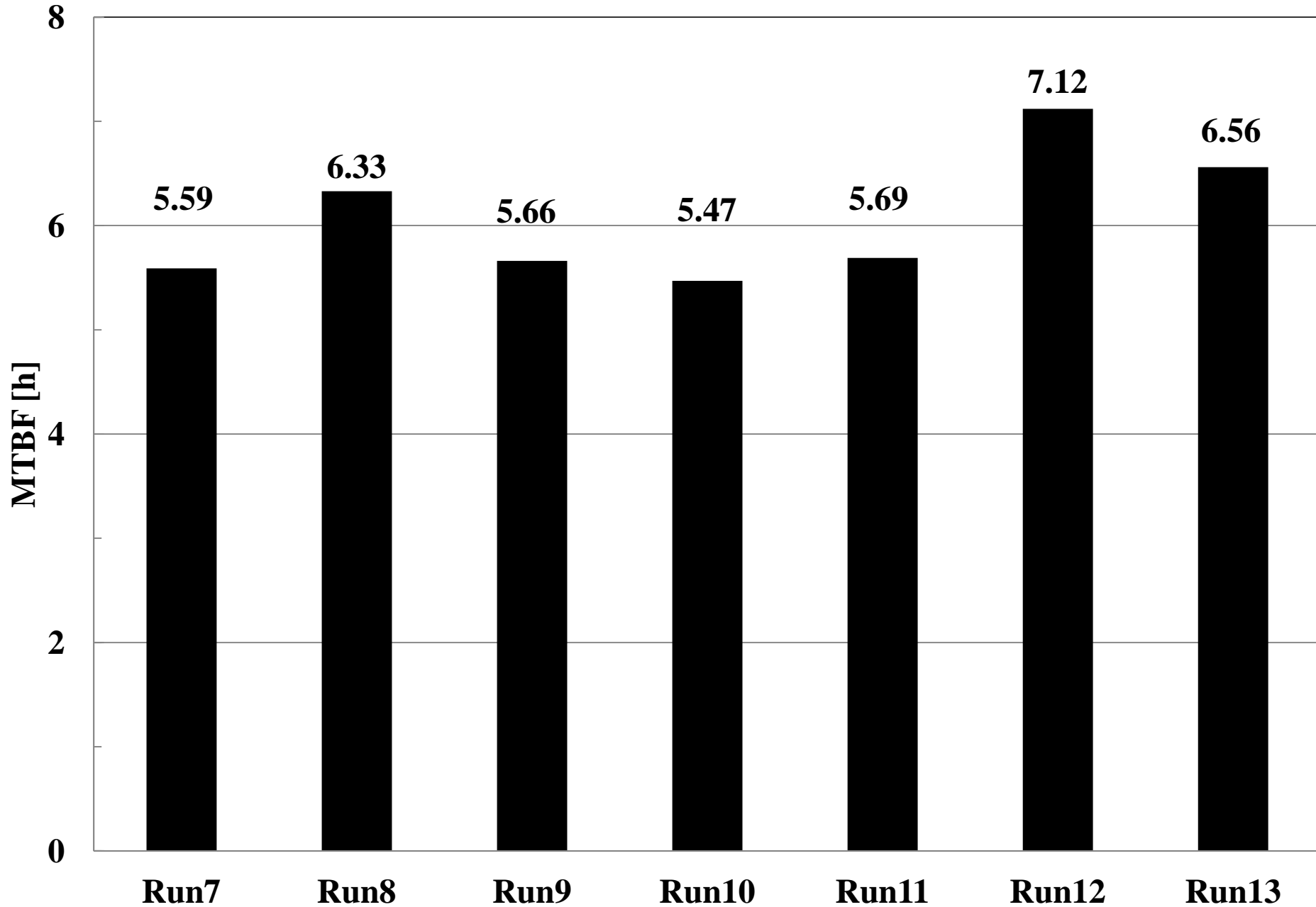


# Run13 System Failure > 1 hr

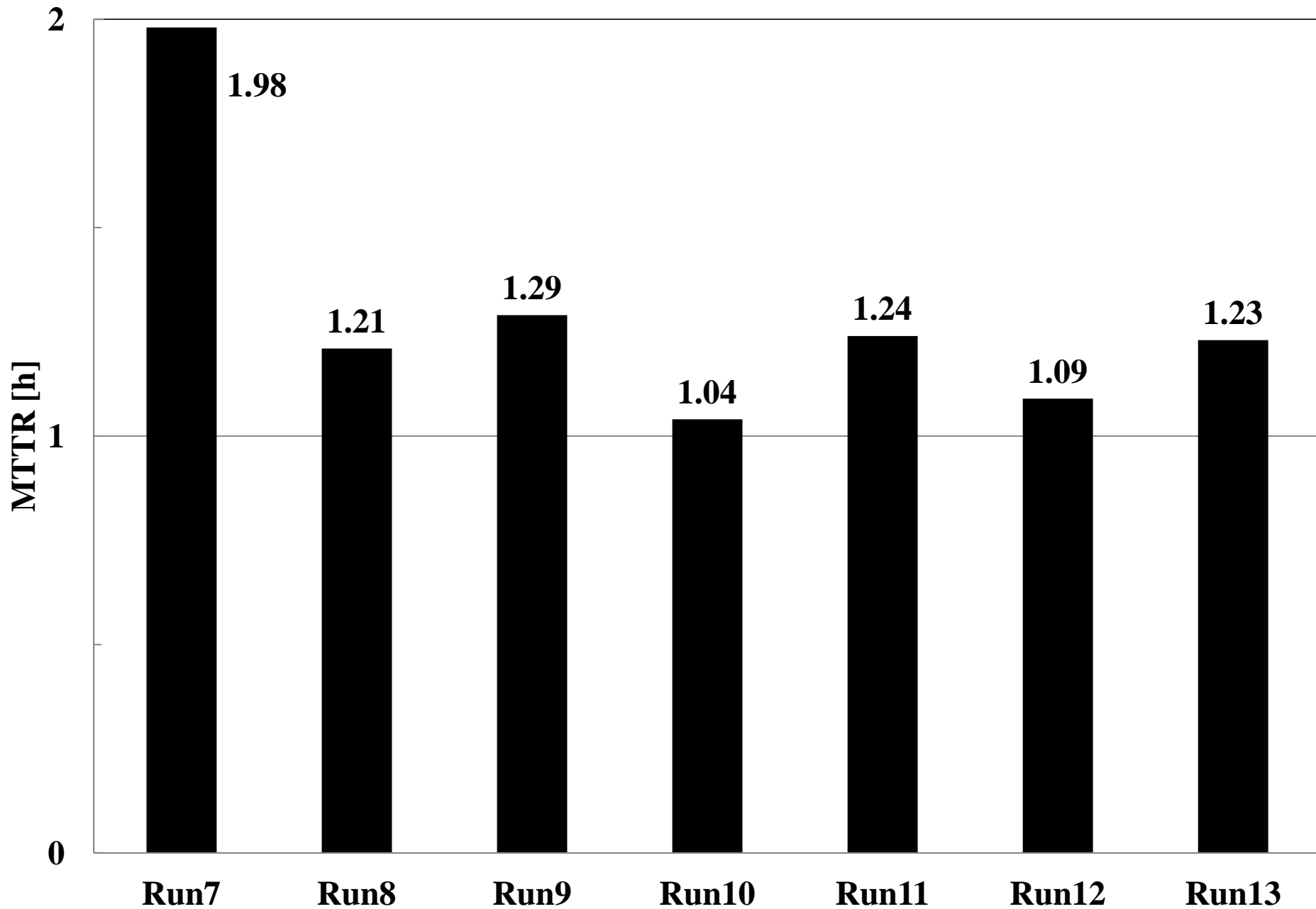


# Mean Time Analysis

# Mean Time Analysis: MTBF

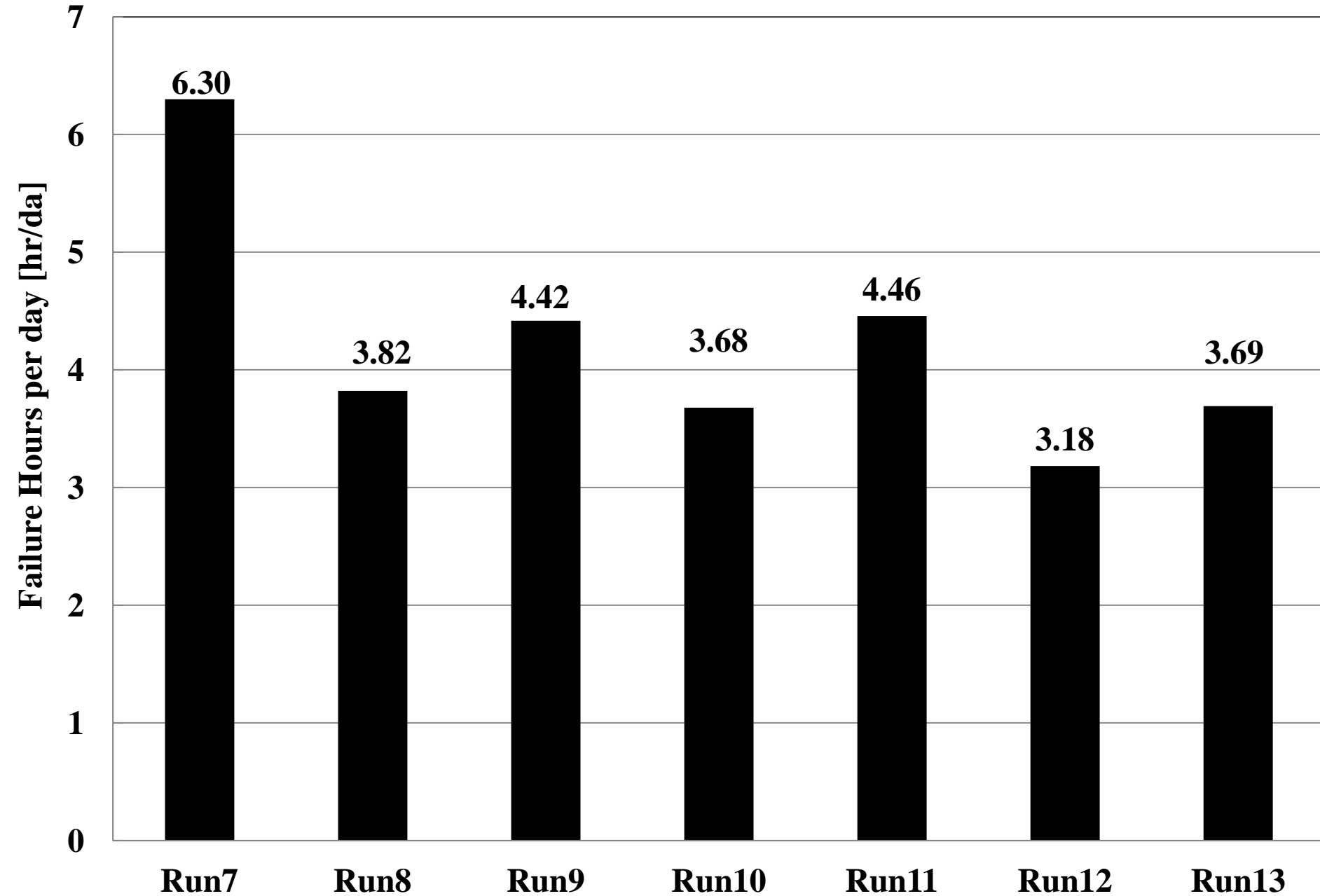


# Mean Time Analysis: MTTR



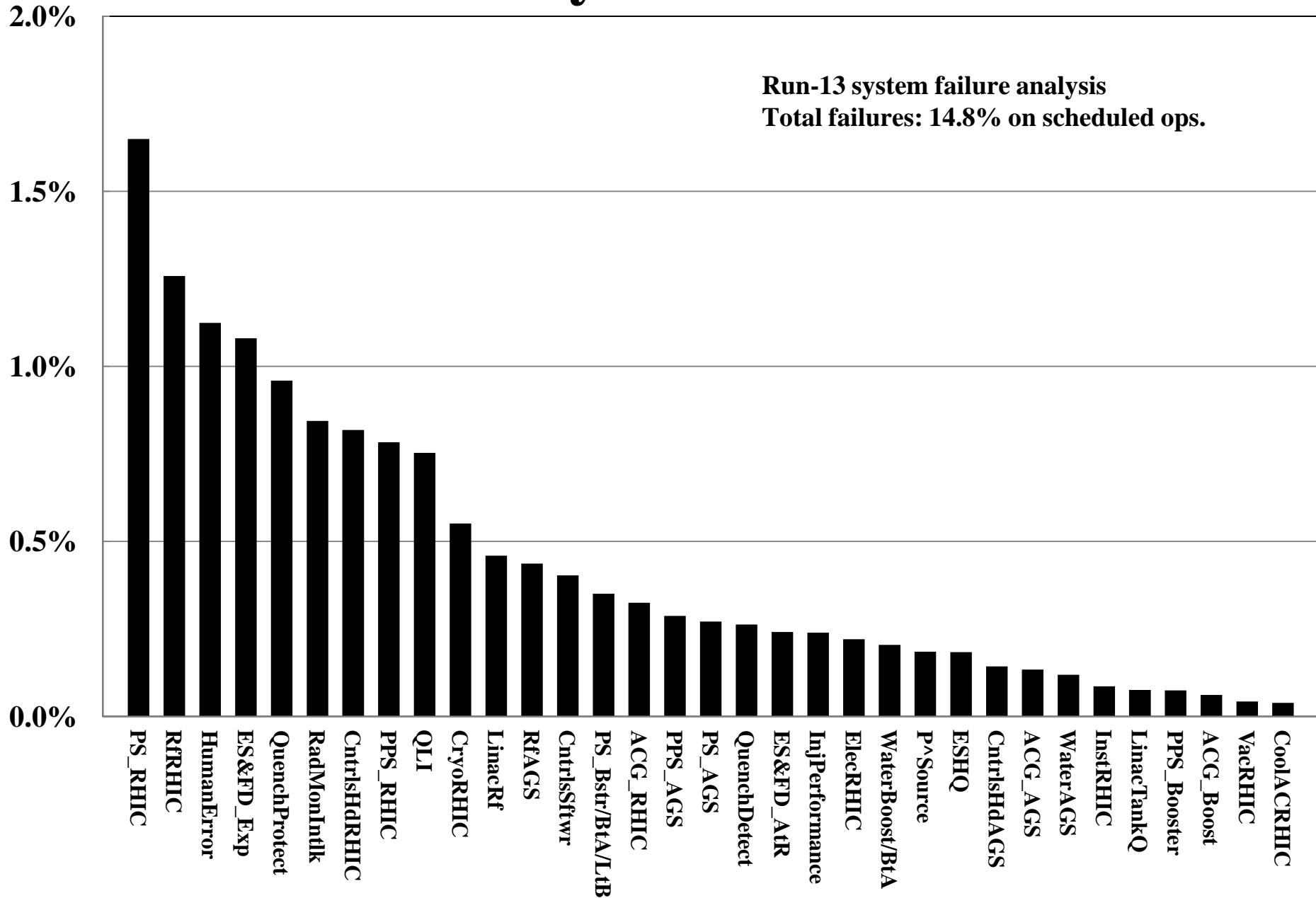


# Average failure hours per day

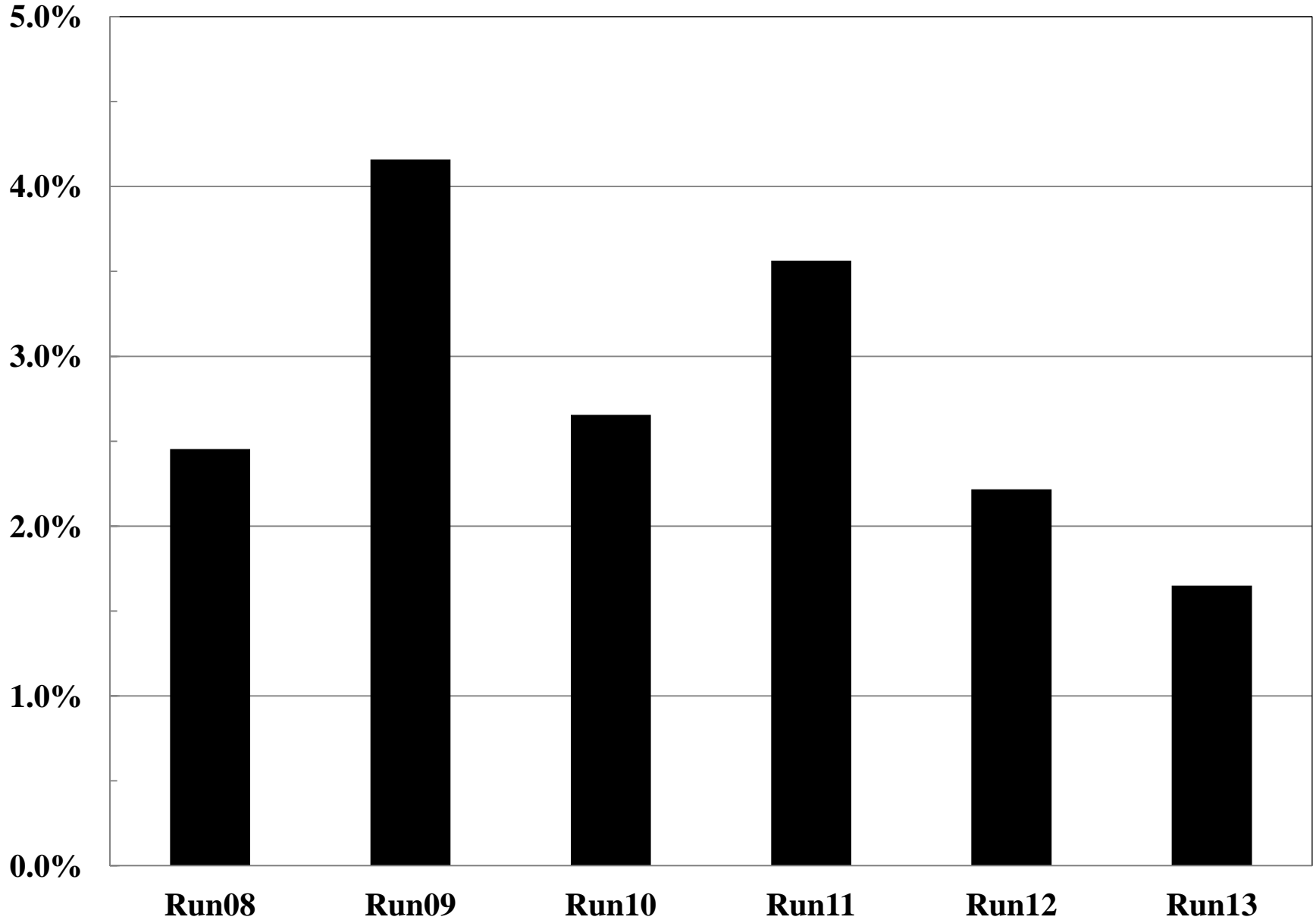


System Failure  
Impact as a per cent  
of Operating Hours –  
by Run

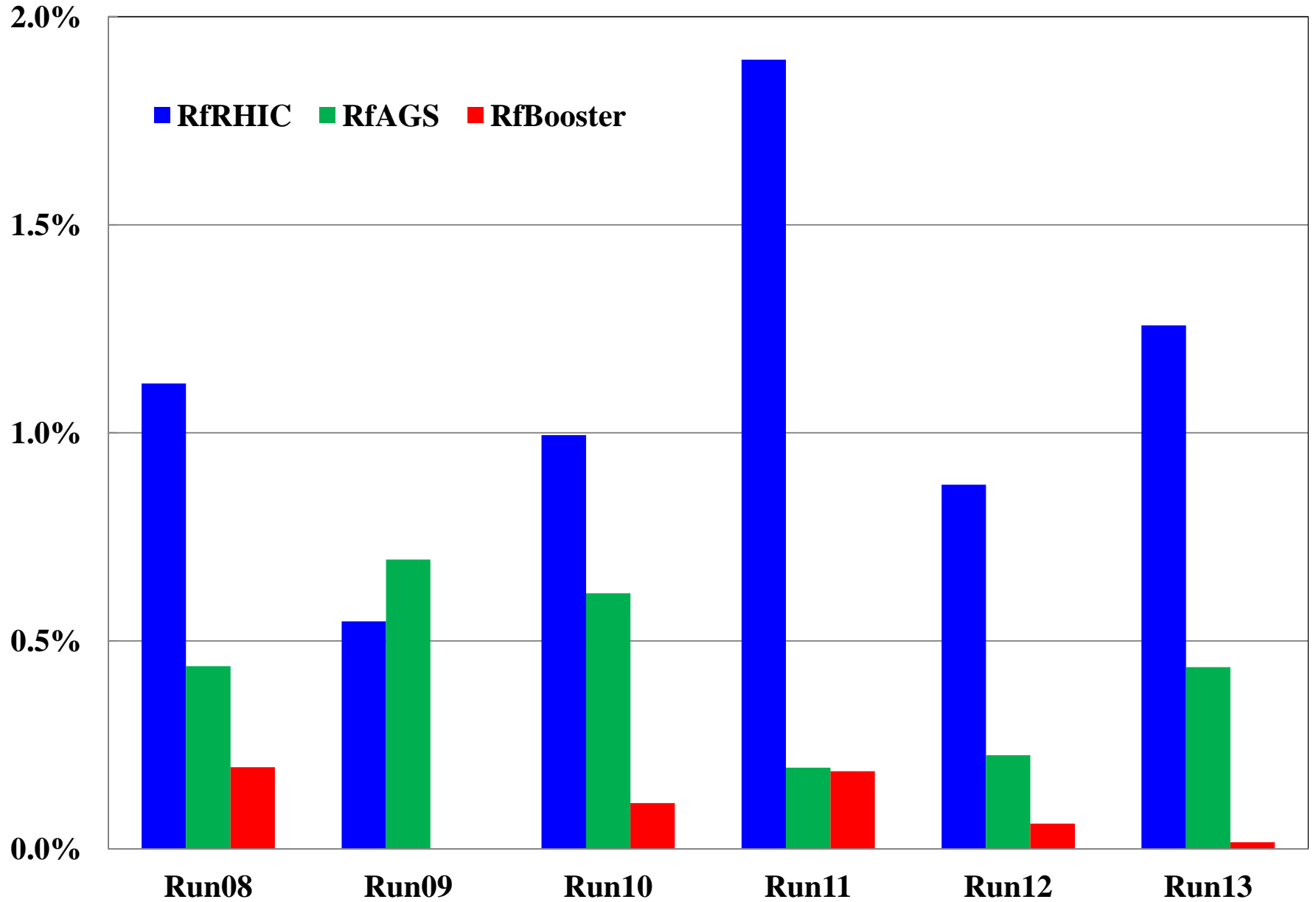
# Run13 System Failure > 1 hr



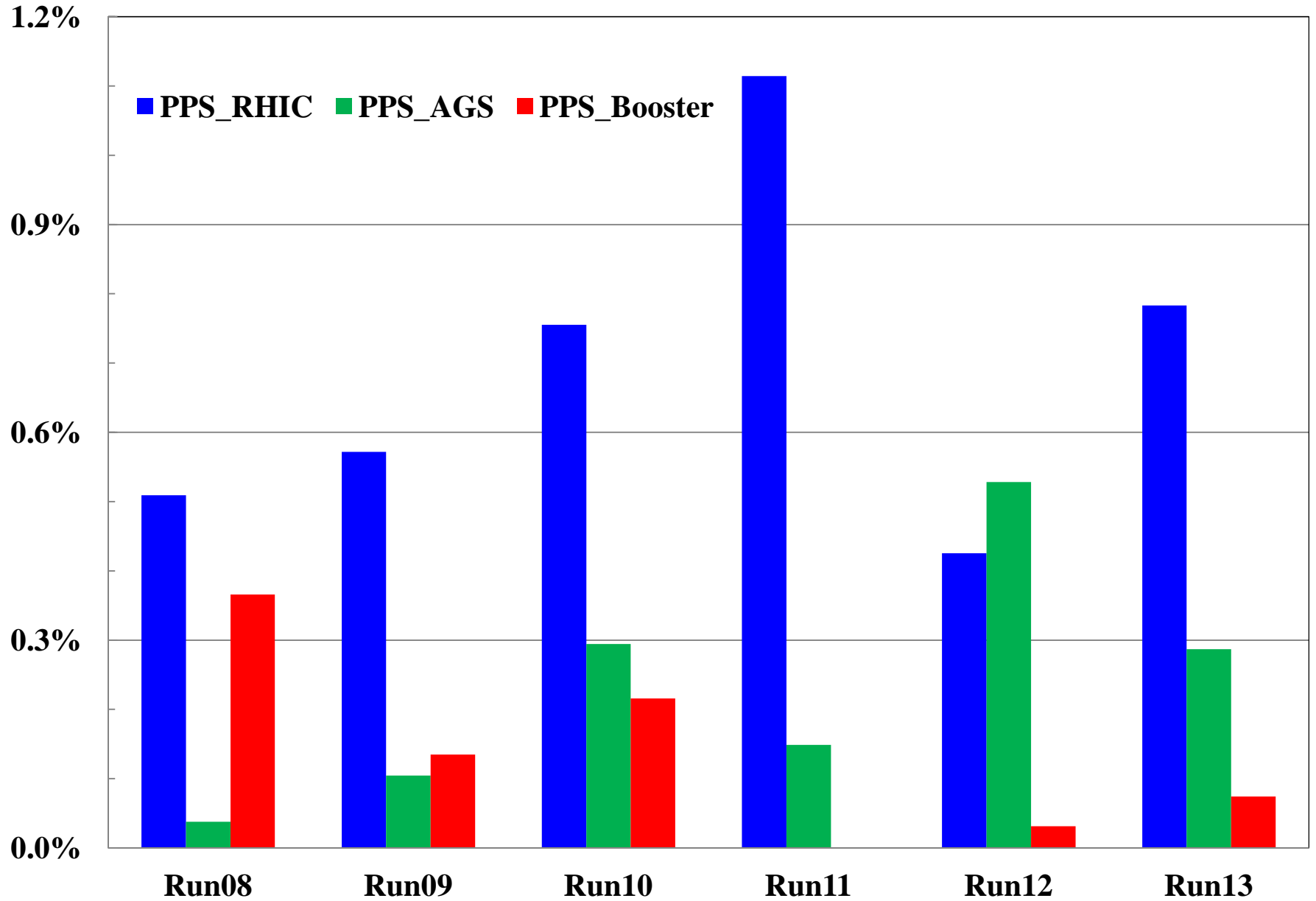
# RHIC PS Failure as % Operating Hours



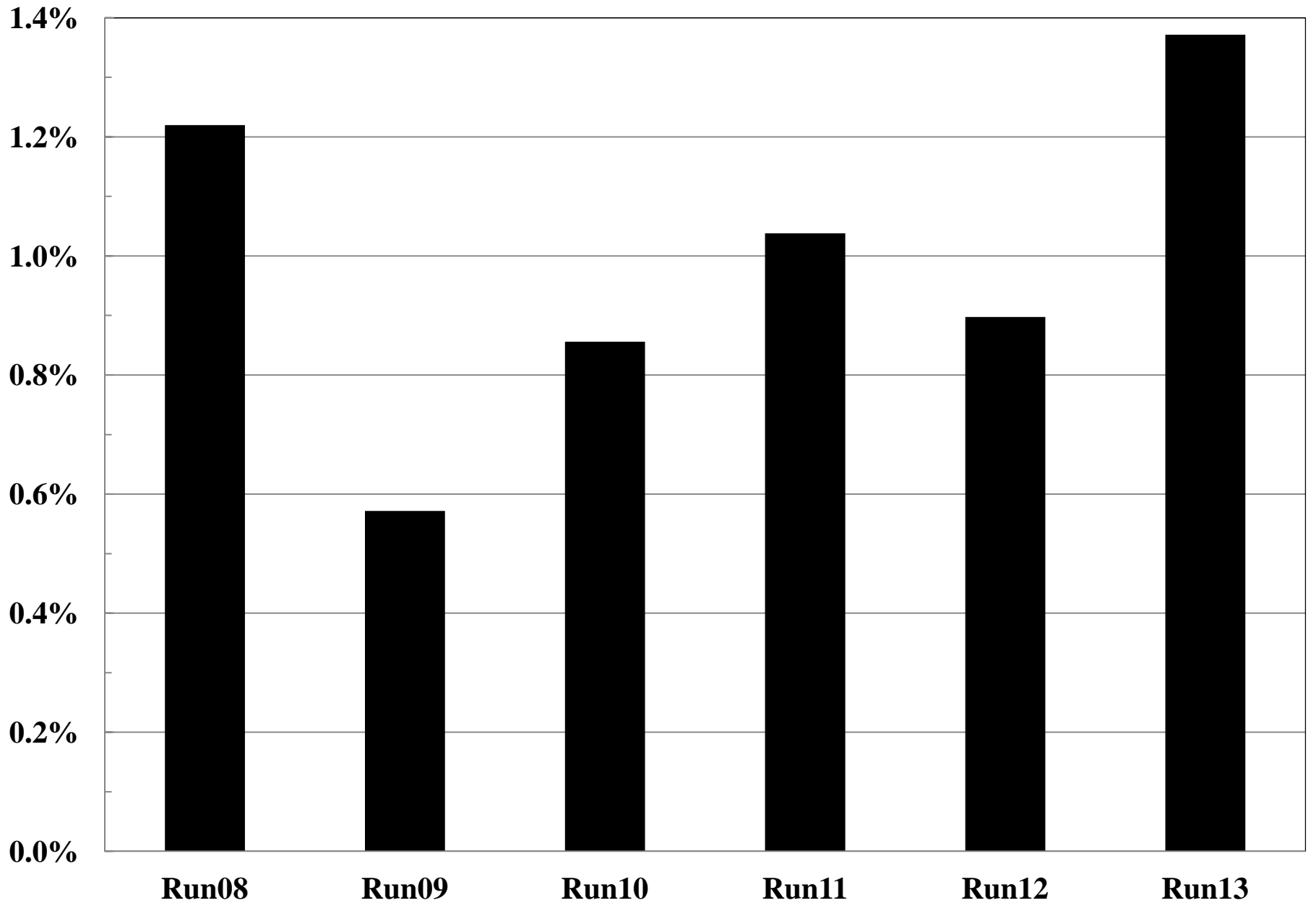
# Rf Failure as % Operating Hours



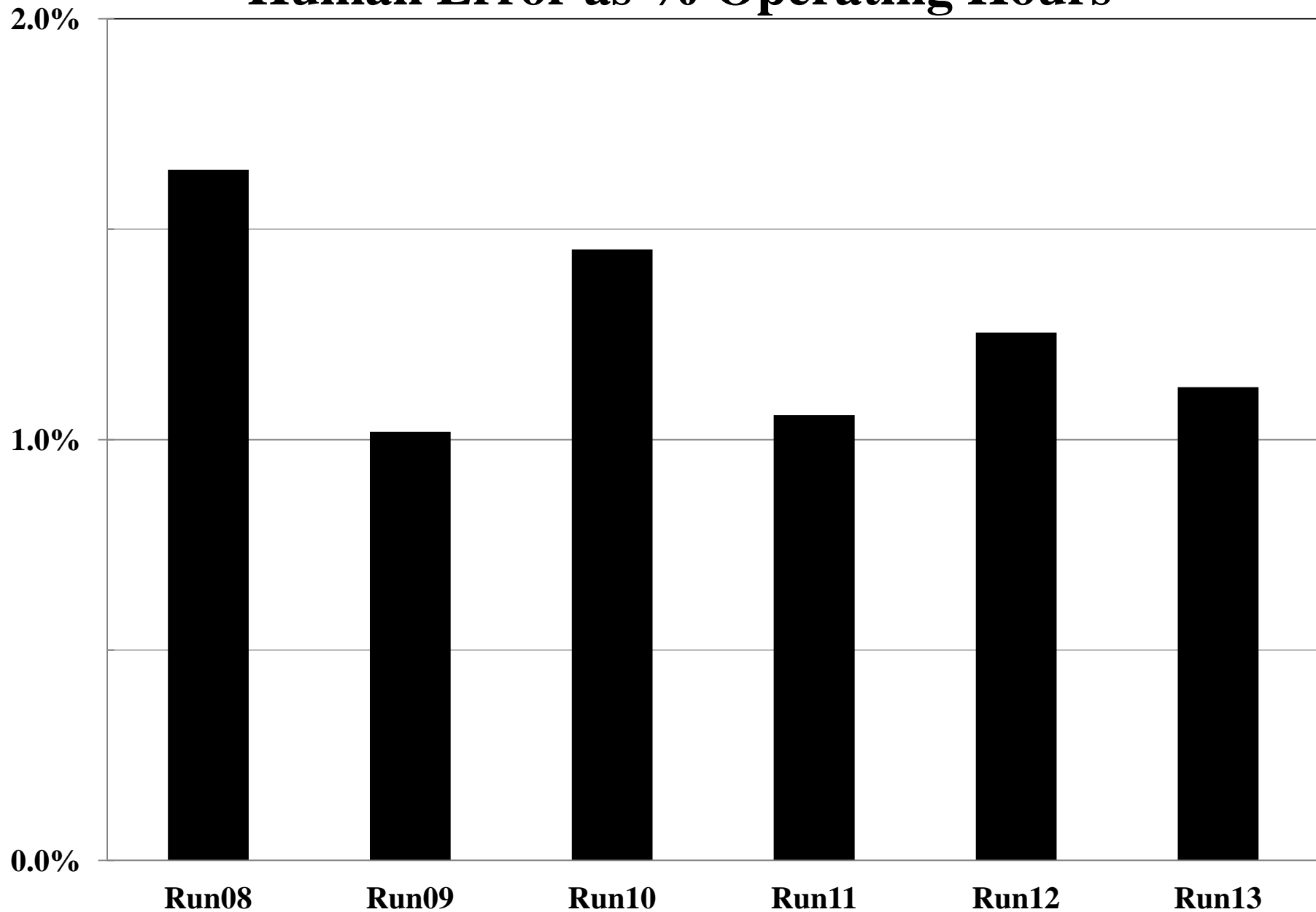
# PulsedPower Failure as % Operating Hours



# Controls (Hd+Sft) Failure as % Operating Hours

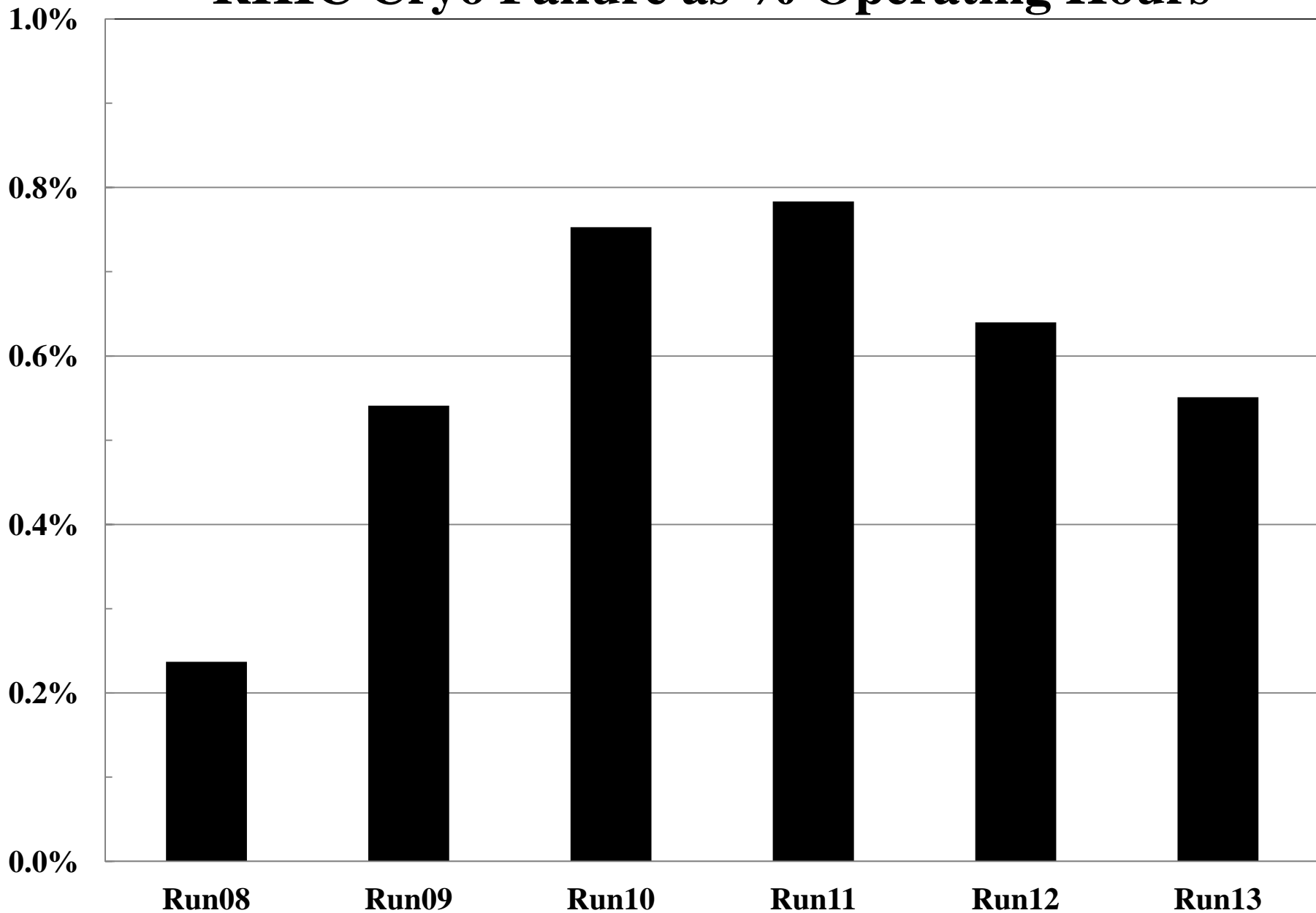


# Human Error as % Operating Hours

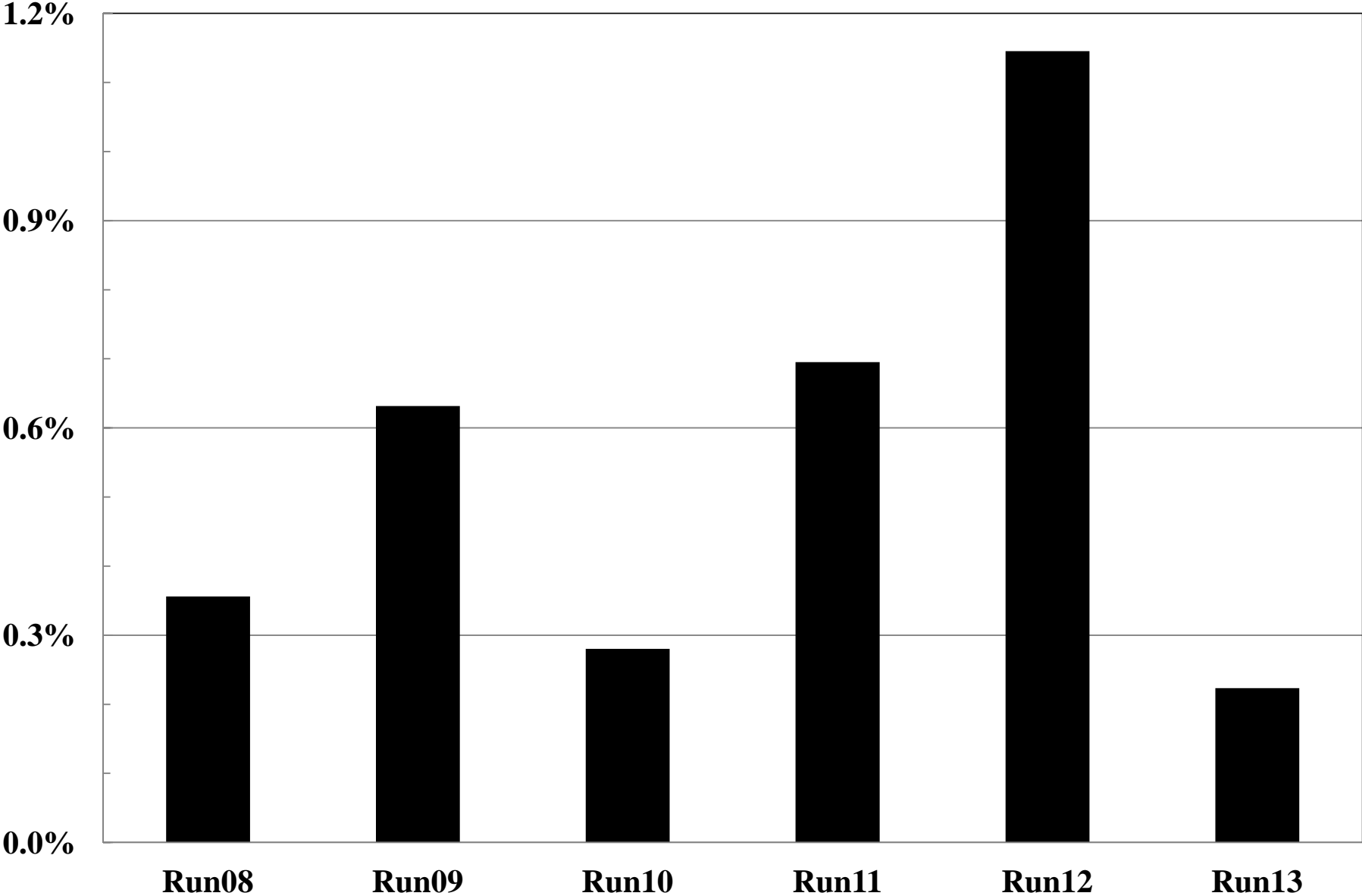




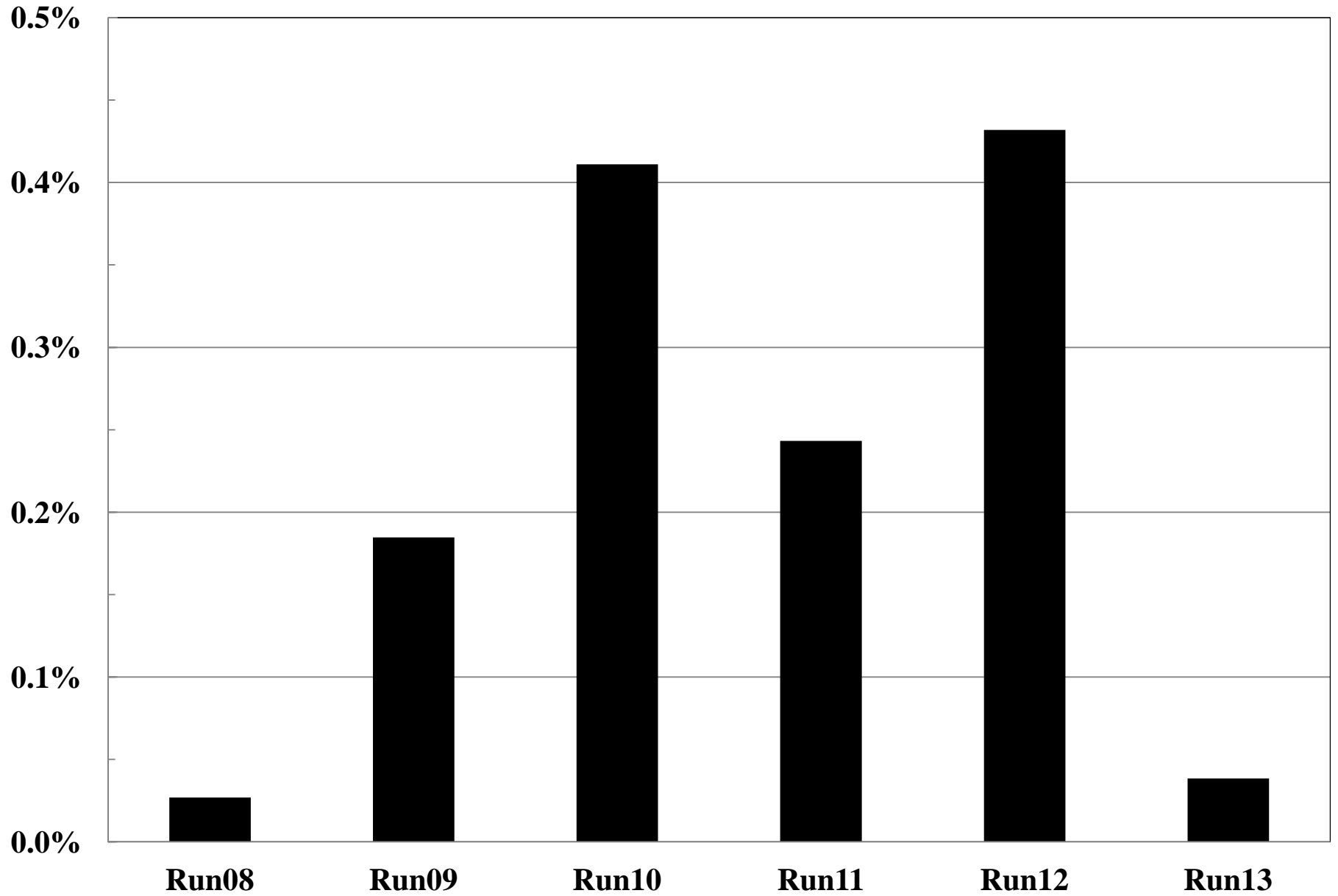
# RHIC Cryo Failure as % Operating Hours



# Electric Power Failure as % Operating Hours

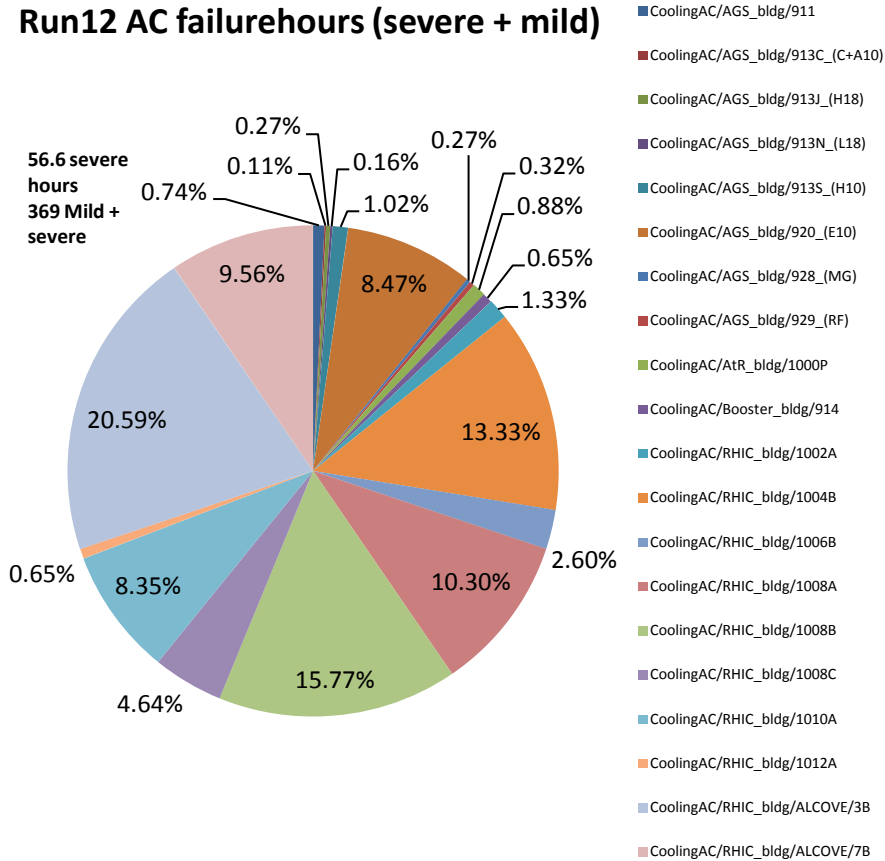


# Air Conditioning Failure as % Operating Hours

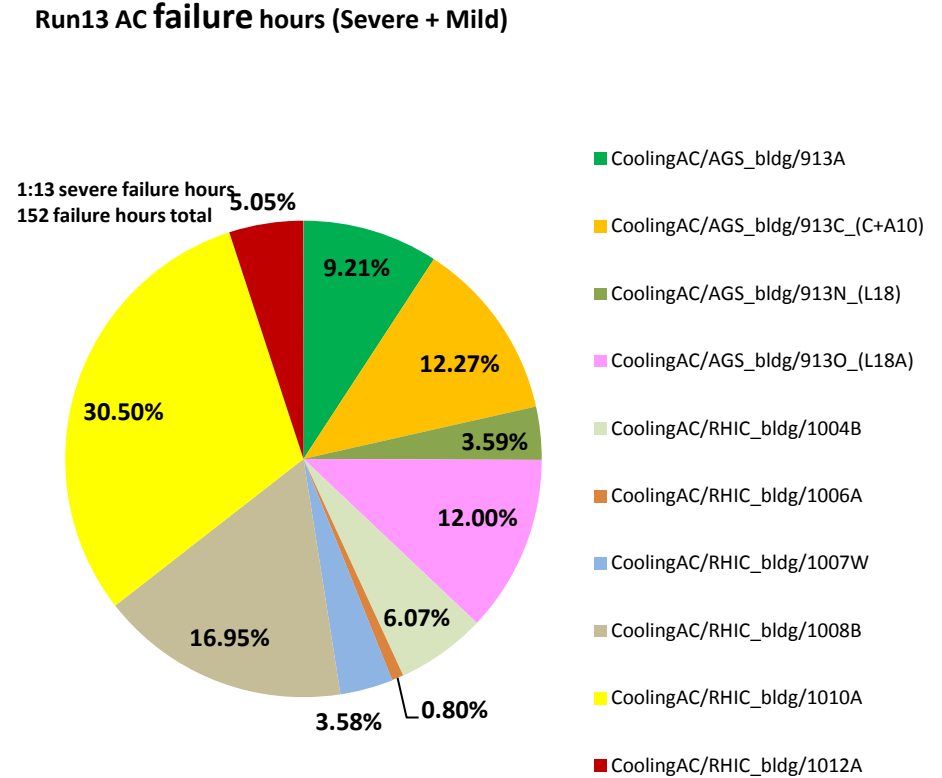


# Air Conditioning Run12 Vs Run13

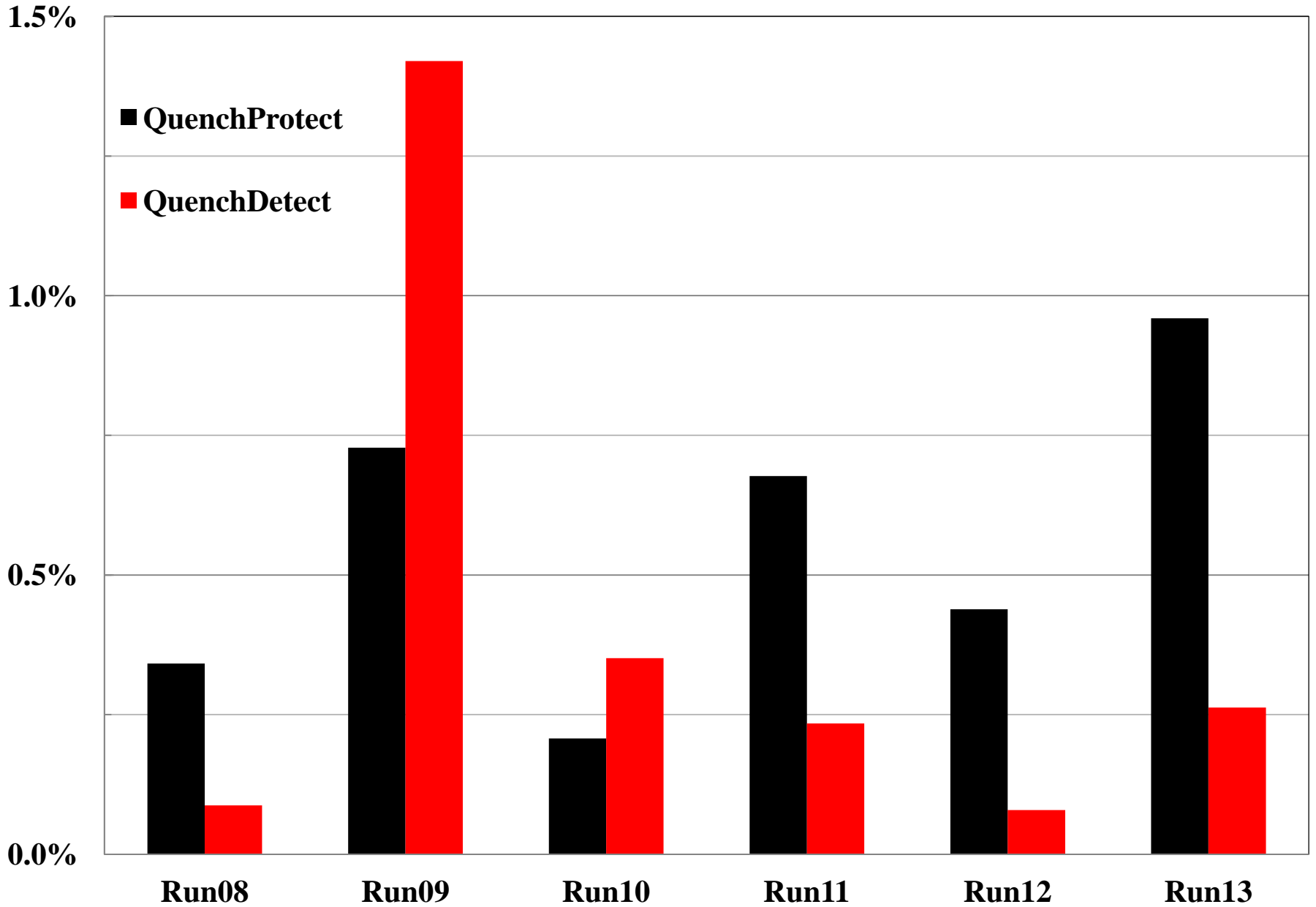
Run12 AC failurehours (severe + mild)



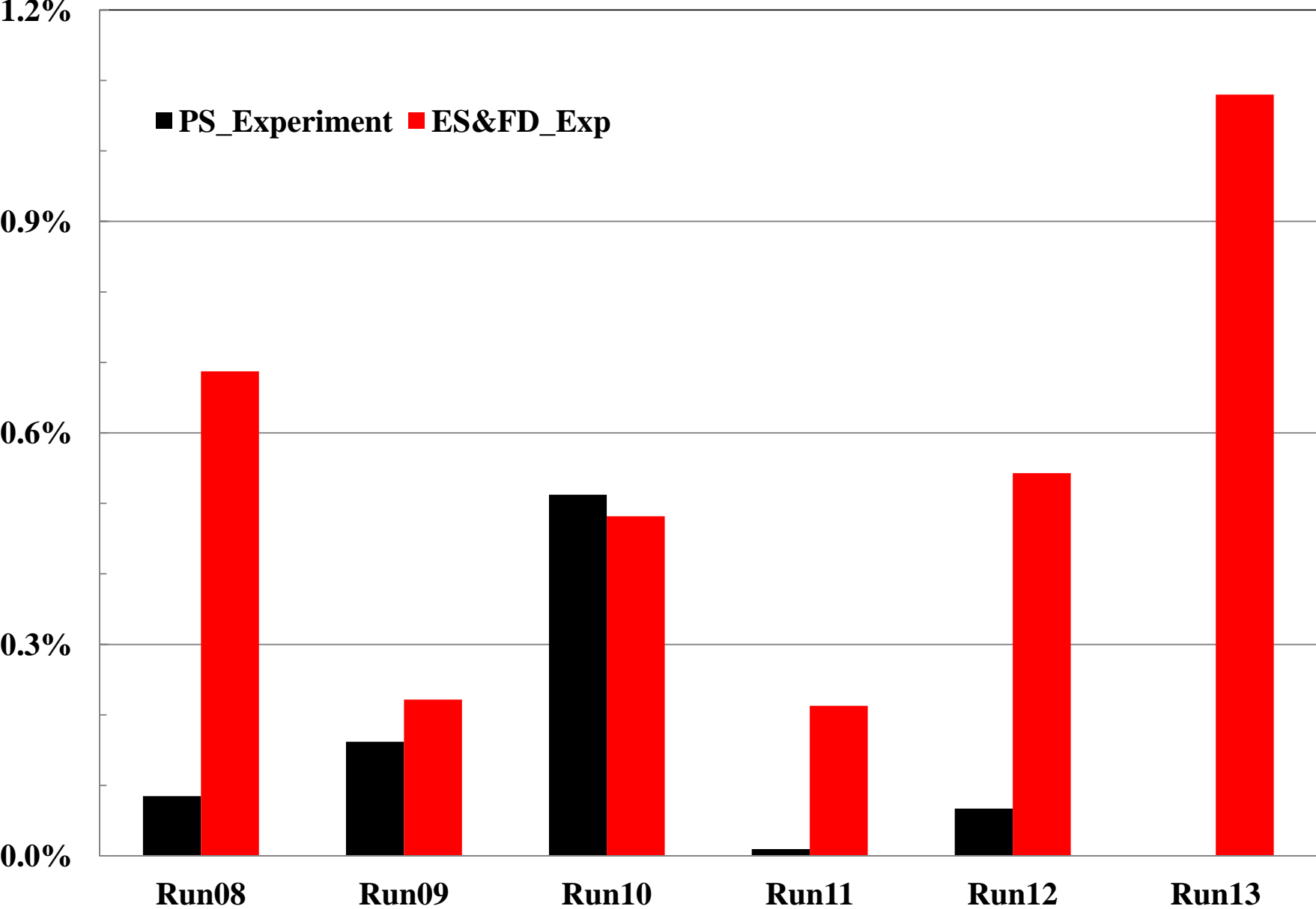
Run13 AC failure hours (Severe + Mild)



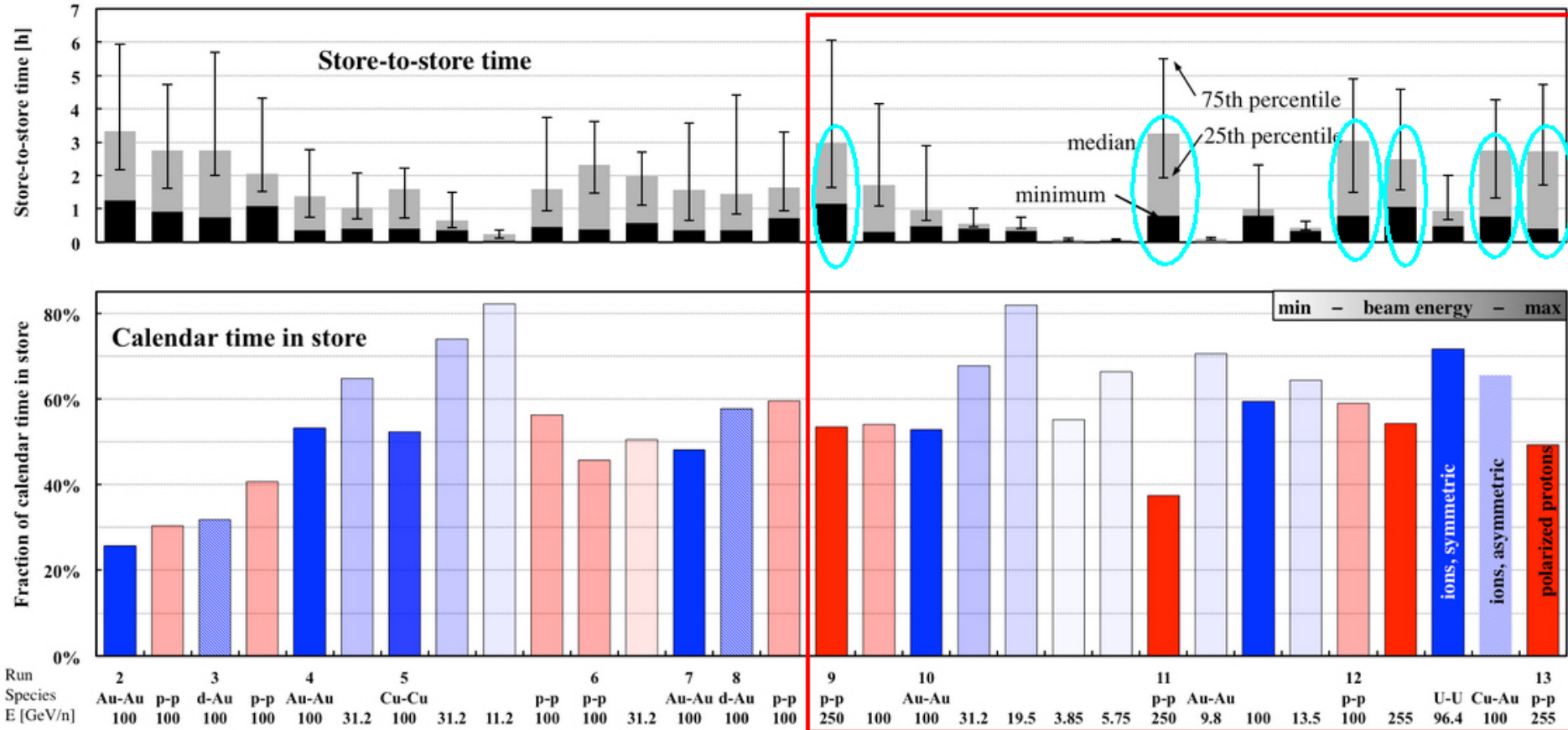
# Quench Protect/Detect Failure as % Operating Hours



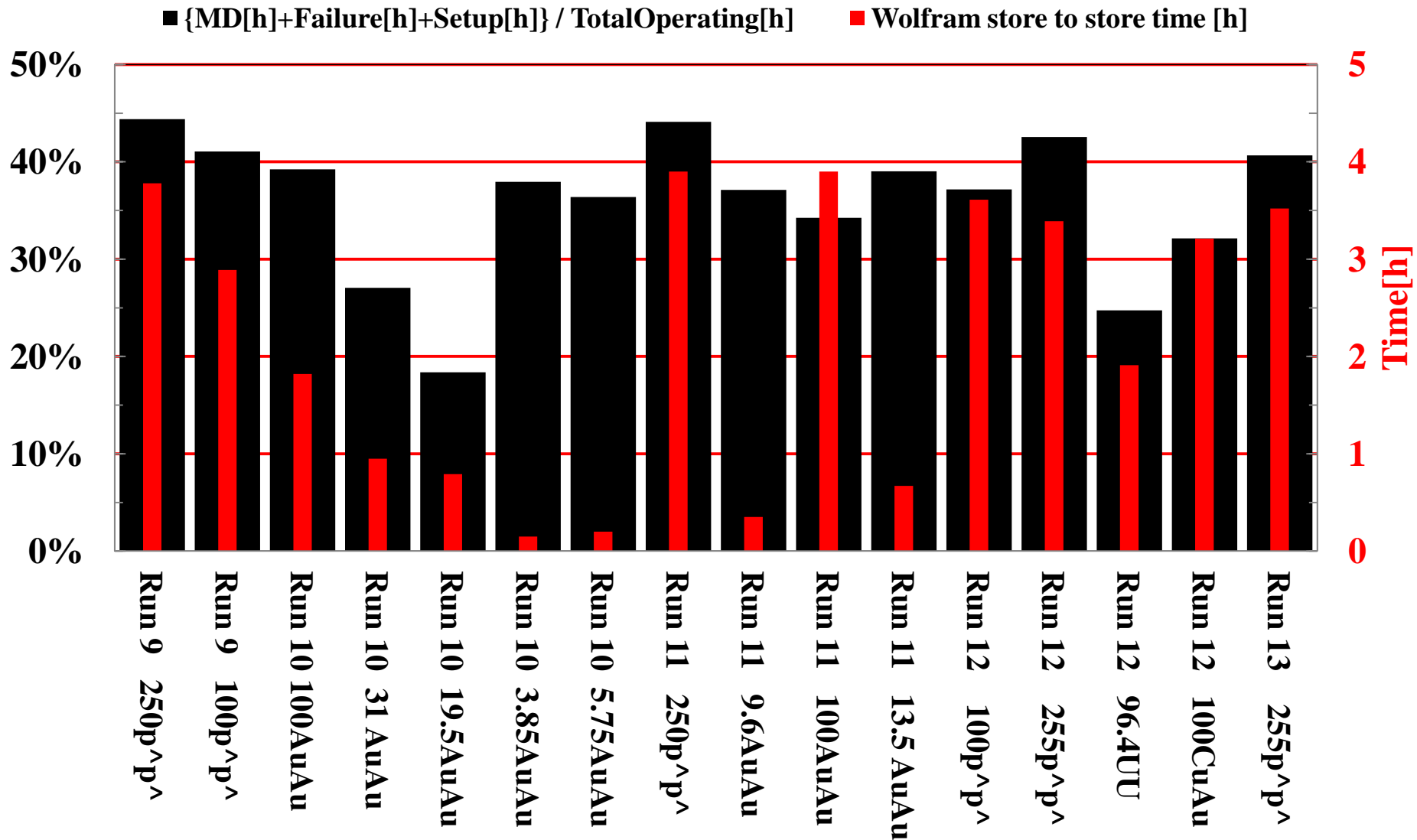
# Experiment Failure as % Operating Hours



# Wolfram observes no improvement in Store to Store Times Run09 thru Run13



# Reasonable agreement – store to store time f(Failure, Setup, Machine Development)





fin