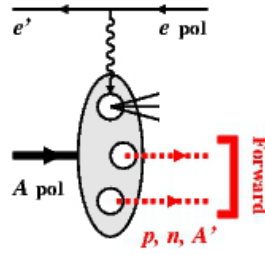


Exploring QCD with light nuclei at EIC



Contribution ID: 35

Type: not specified

Nuclear partonic structure from breakup measurements $A \geq 2$

Thursday 23 January 2020 16:10 (30 minutes)

Presenter: DUPRE, Raphael (IPN Orsay)

Session Classification: Tagged EMC effect: Fixed-target, EIC