

Weak Lensing Report

Systematics

Systematics

Systematics

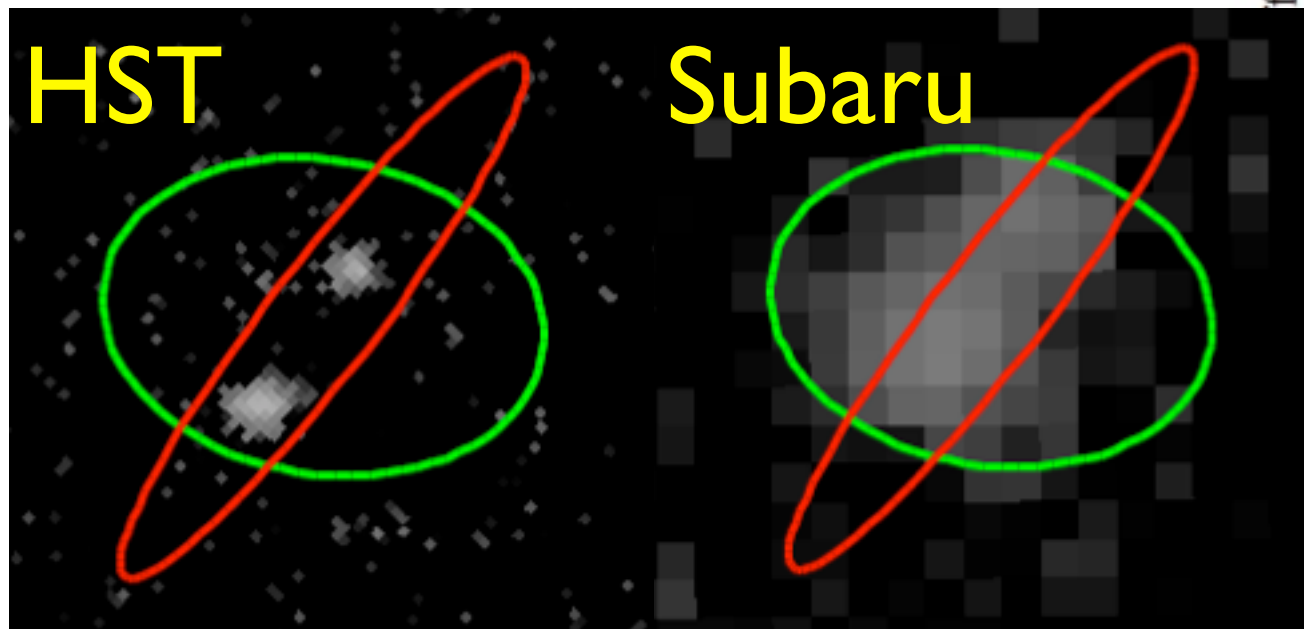
Systematics

Systematics

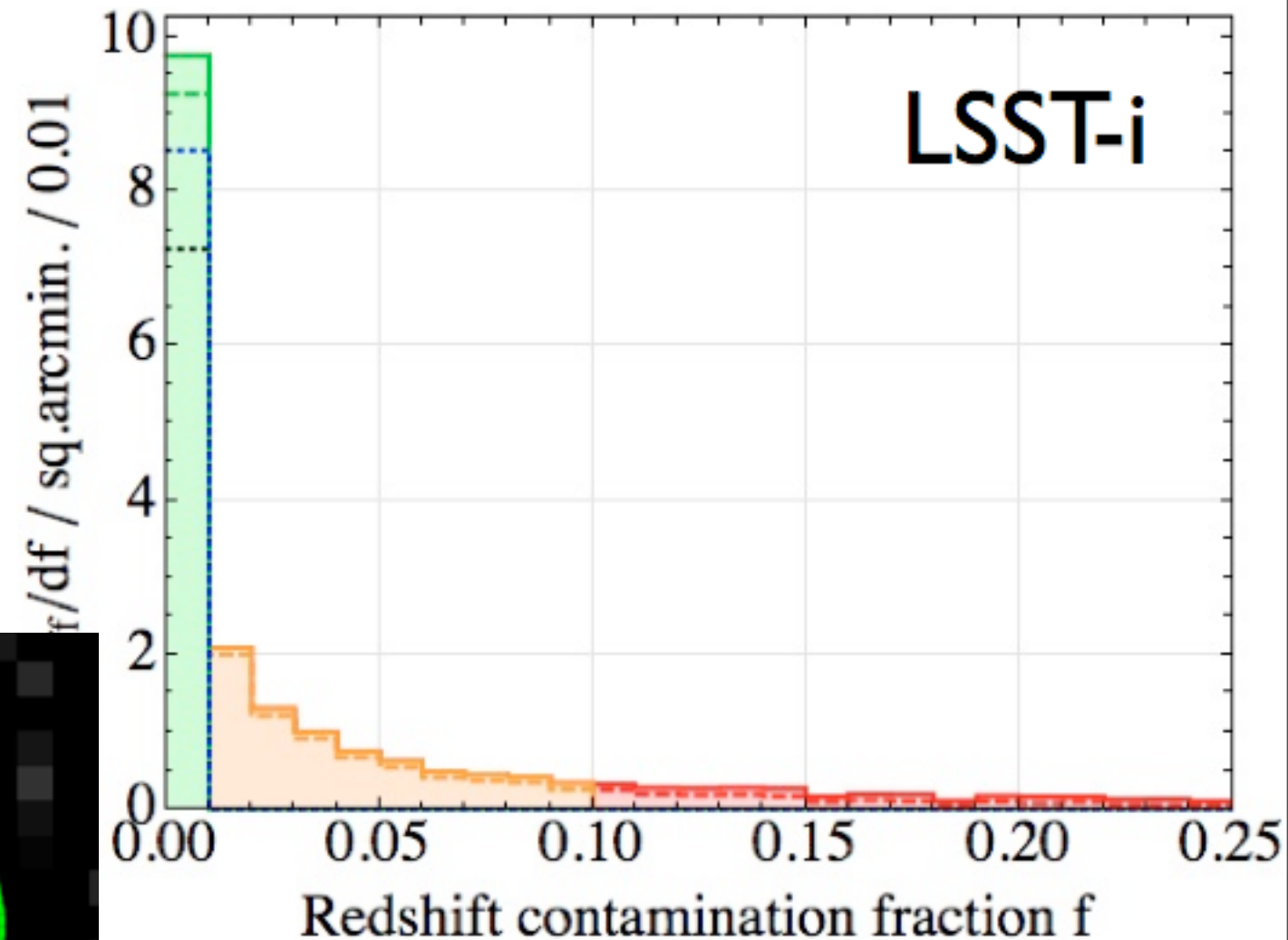
Weak Lensing Report

Deblending:

- Large fraction of objects will be blended.
- Most with different redshifts!



W. Dawson

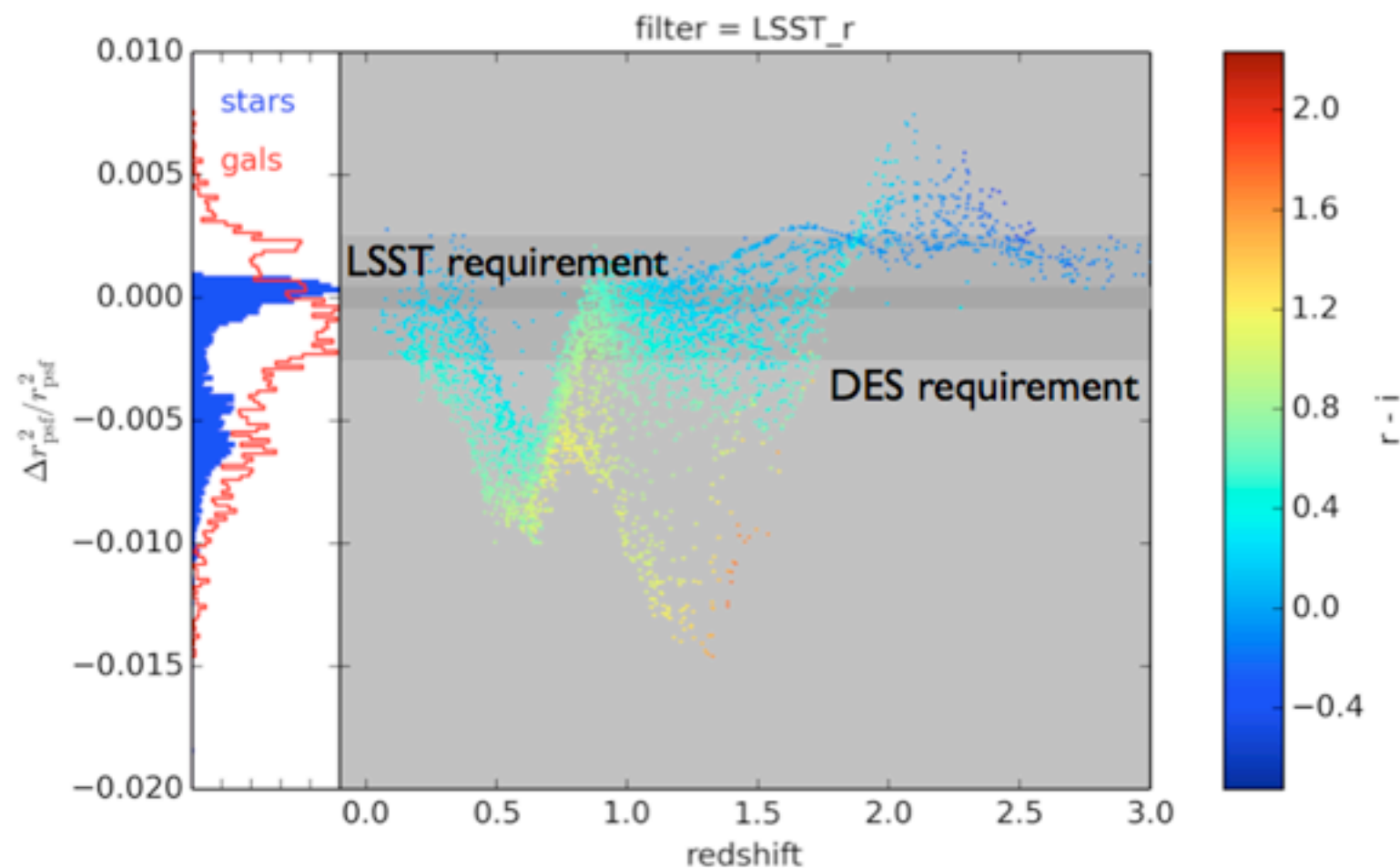


D. Kirkby

Weak Lensing Report

Chromaticity:

- The largest systematic so far is from the wavelength dependent PSF size.
- Haven't studied bulge + disk with different SEDs yet.

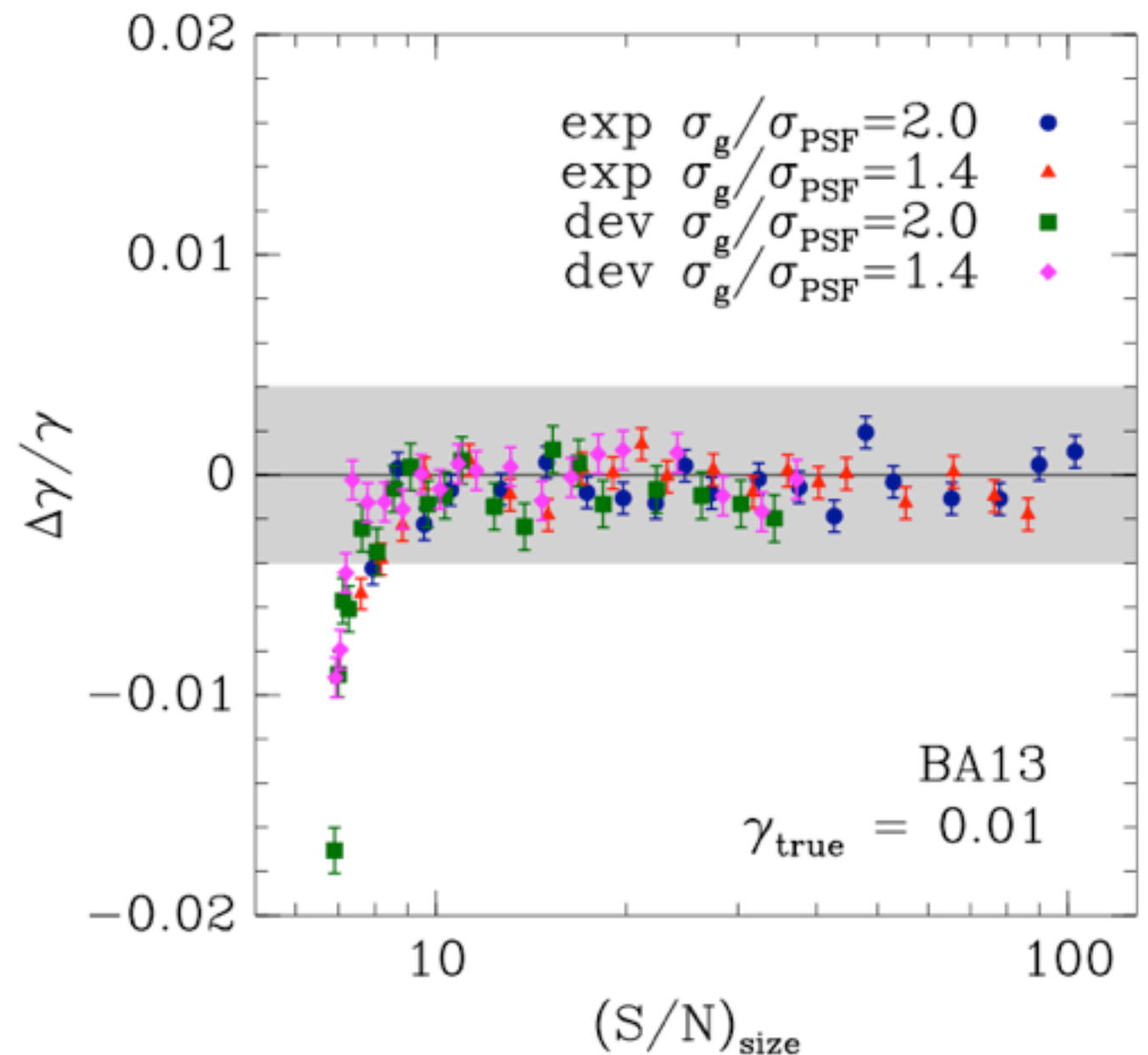


J. Meyers

Weak Lensing Report

Noise bias:

- Theoretically unbiased estimator still showing biases at low S/N.
- Smoother when considered a function of S/N of galaxy size.

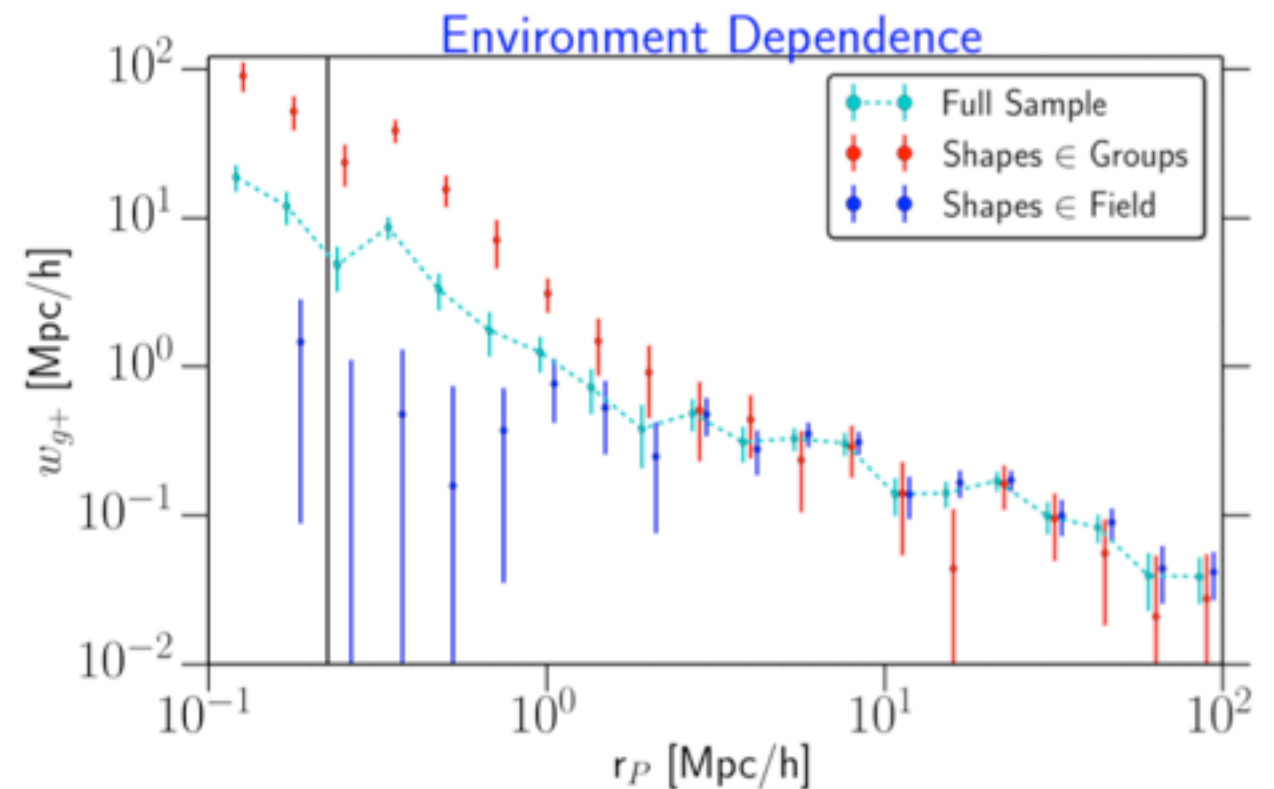
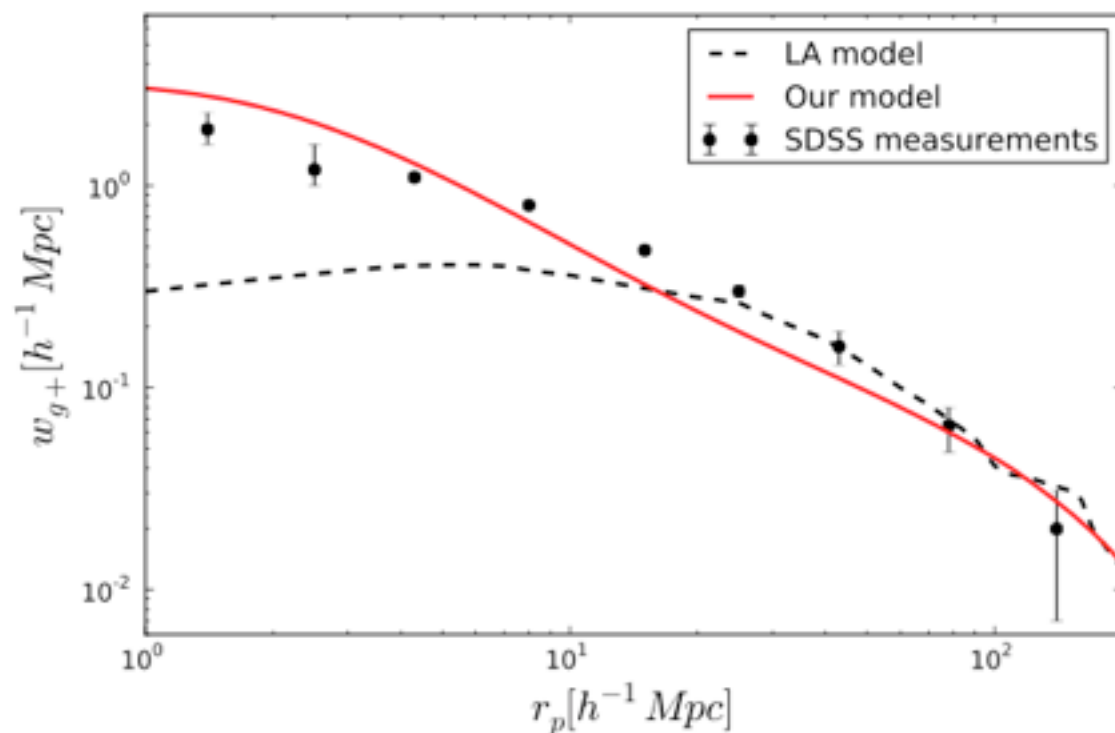


E. Sheldon

Weak Lensing Report

Intrinsic Alignments:

- Effect different on small scales for field vs group galaxies.
- Linear alignment model is also insufficient on small scales.



S. Singh

M. Schneider