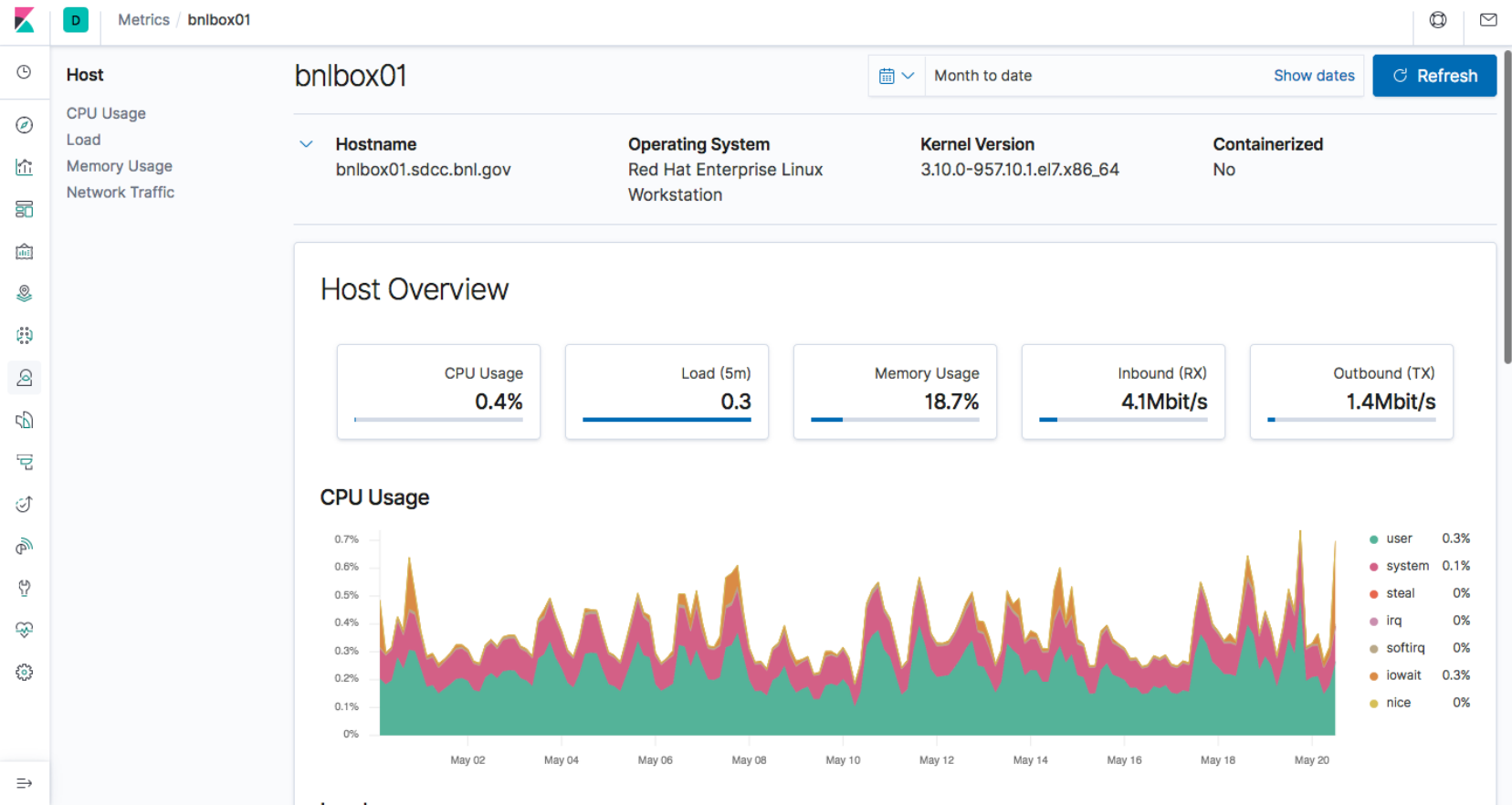


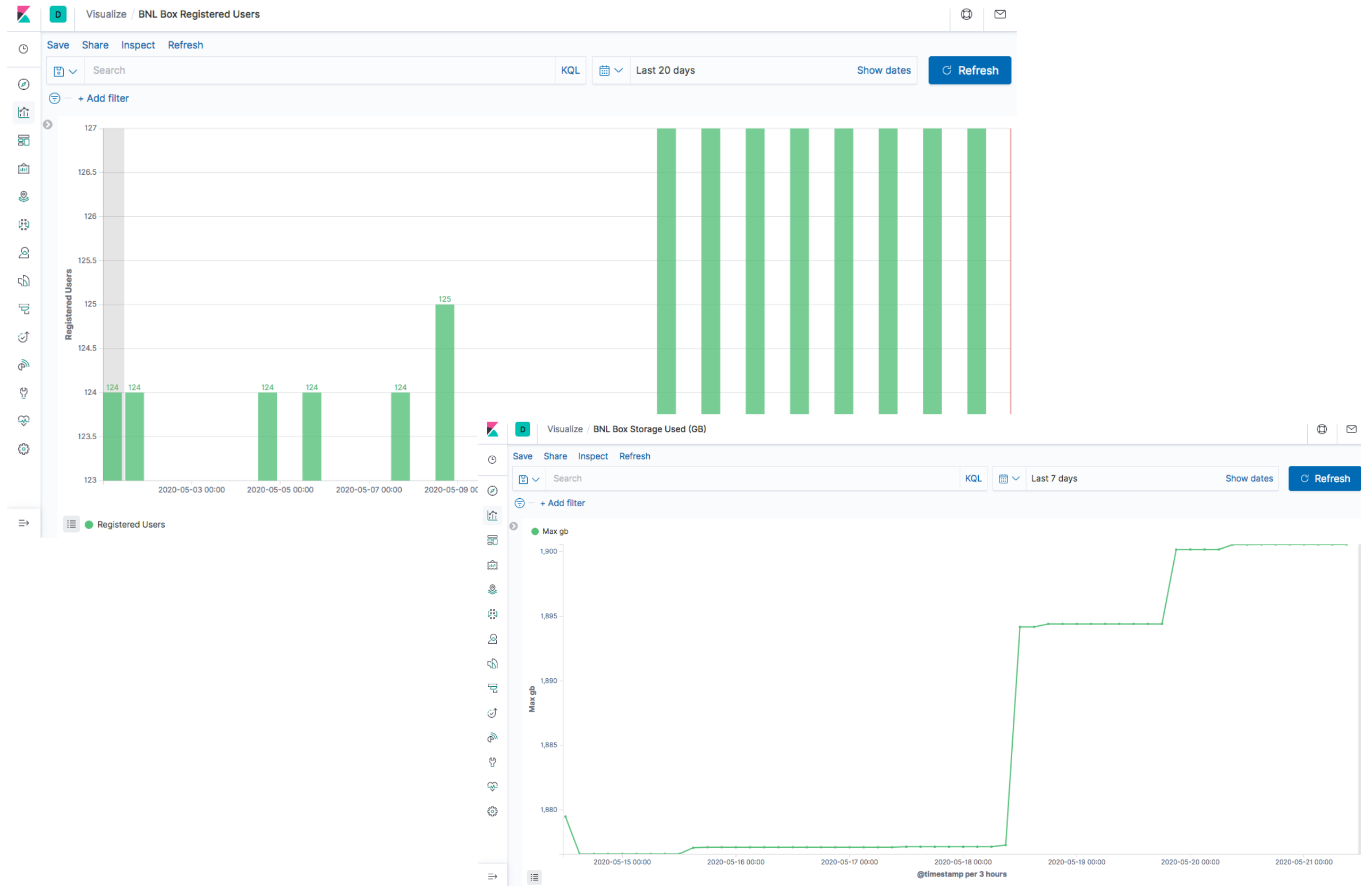
# ELK Monitoring for BNL Box

- ELK stack monitoring for BNL Box servers was set up by Terry Healy over the last few months
- ELK cluster running on 4 VMs elk0[1-4].sdcc.bnl.local
  - elk01-03: Provides storage and general ES input
  - elk04: Provides storage, Kibana, and Logstash
  - All running Elasticsearch V 7.6.0
- Filebeats used to send Apache SSL and Next Cloud logs from BNL Box servers to Logstash running on elk04
- Uuid to uname translation applied to Nextcloud log based on info from PostgreSQL database on bnlboxdb02
- Periodic Logstash database queries track number of registered users and storage usage vs. time.

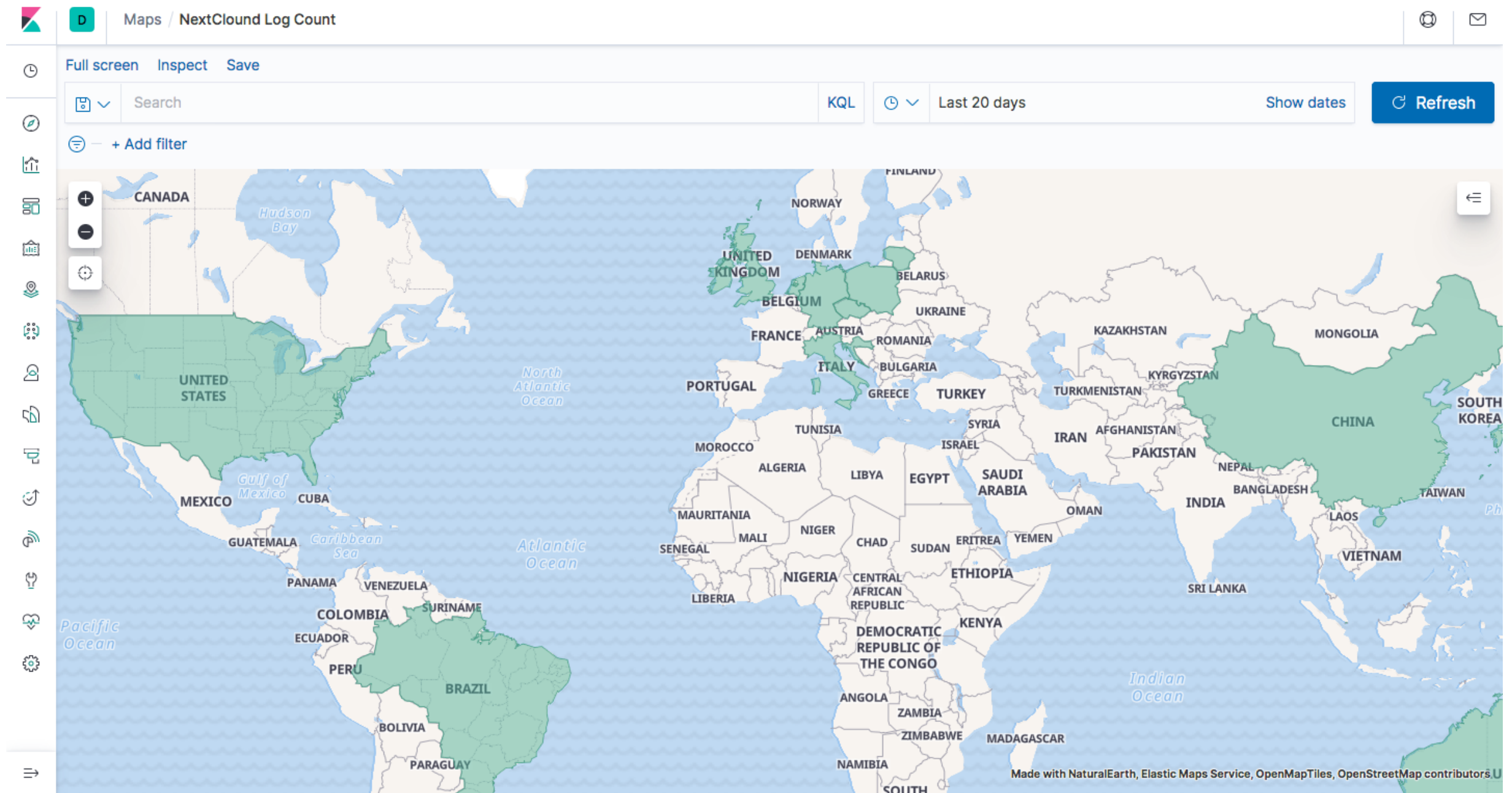
# BNL Box Server Metrics



# BNL Box Usage Metrics



# BNL Box Network Geolocation Metrics



# Plans

- Expand monitoring to include displays of usage/activity by user
- Deploy useful dashboards
- Evaluate ELK stack hardware needs and possibly expand monitoring to other services
- Terry has ended his temporary involvement with this effort (thank you Terry!)
  - Expect new hires to pick up and expand upon this work