

Projections for GPD H with CLAS12

Count rates
projections for 12 GeV
unpolarized
long. and transv.
polarized targets

↓ Acceptance, Binning, Resolutions

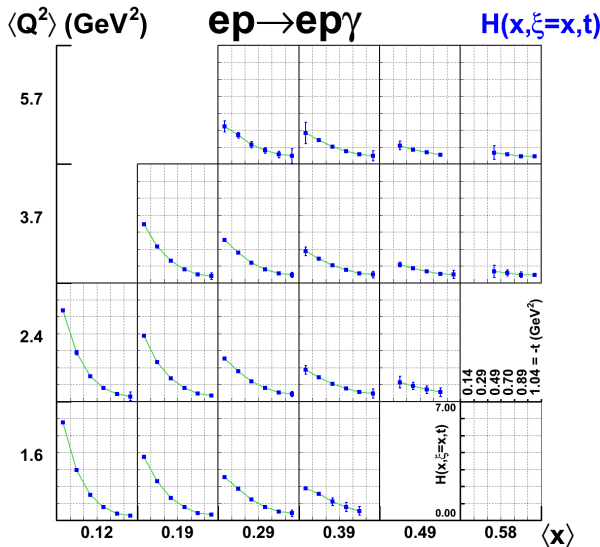
Observables, Uncertainties
 σ , A_{LU} , A_{LL} , A_{UT} ...

↓ Extraction procedures

Generalized Parton
Distributions
 H , \tilde{H} , E , \tilde{E}

↓ Fourier Transform

Quark densities $q(x_B, p_\perp)$
Angular Momentum Sum Rule
related to E



Projections for GPD E with CLAS12

Count rates
projections for 12 GeV
unpolarized
long. and **transv.**
polarized targets

⇓ Acceptance, Binning, Resolutions

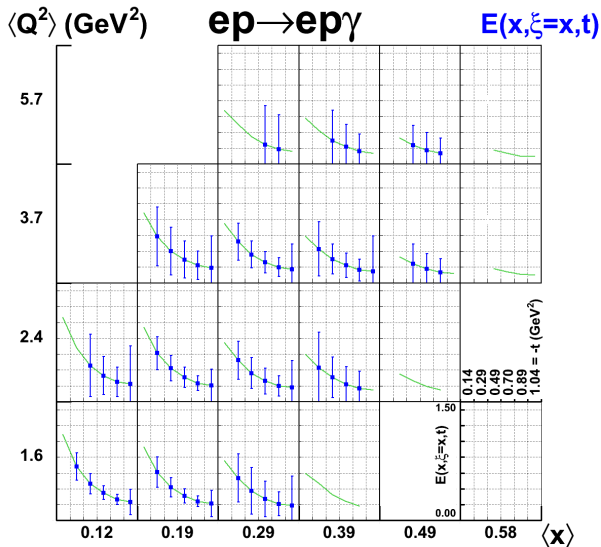
Observables, Uncertainties
 σ , A_{LU} , A_{LL} , A_{UT} ...

⇓ Extraction procedures

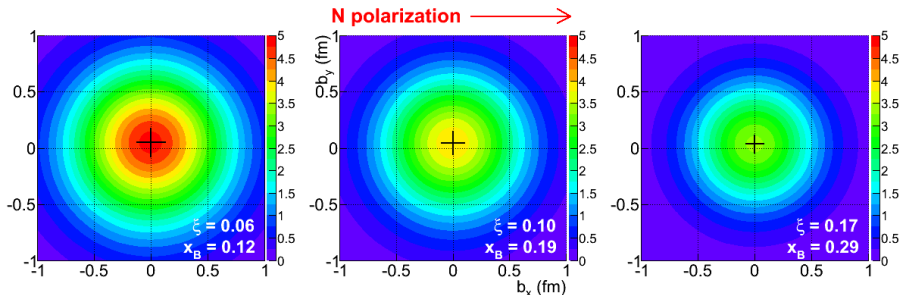
**Generalized Parton
Distributions**
 H , \tilde{H} , E , \tilde{E}

⇓ Fourier Transform

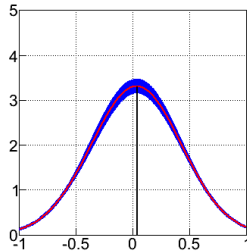
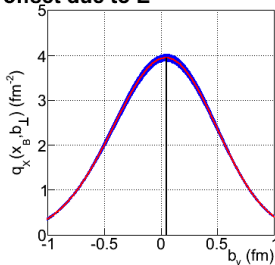
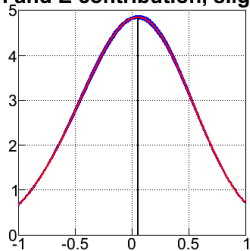
Quark densities $q_{\perp}(x_B, p_{\perp})$
Angular Momentum Sum Rule
related to E



Projections for quark transverse profile



H and E contribution, slight offset due to E



Projections for quark transverse profile

