

# Helicity at Small $x$ : The Single-Logarithmic Contribution

Yossathorn (Josh) Tawabutr  
with Yuri Kovchegov and Andrey Tarasov

The Ohio State University

*tawabutr.1@osu.edu*

April 14, 2021

# Background

Proton helicity can be decomposed into spin and orbital angular momentum (OAM) of quarks and gluons [Jaffe and Manohar, 1990]

$$\frac{1}{2} = S_q + S_G + L_q + L_G \quad (1)$$

where

$$S_q(Q^2) = \frac{1}{2} \int_0^1 dx \Delta\Sigma(x, Q^2) = \frac{1}{2} \int_0^1 dx \sum_f [\Delta q_f(x, Q^2) + \Delta \bar{q}_f(x, Q^2)] . \quad (2)$$

Experiments have measured  $S_q$  but can only include  $0 < x_{\min} \leq x \leq 1$ .

**Objective:** Find the contribution to  $S_q$  coming from  $\Delta\Sigma$  as  $x \rightarrow 0$ .

At small Bjorken- $x$ , quark helicity distribution satisfies

$$\Delta\Sigma(x, Q^2) = \frac{N_c N_f}{2\pi^3} \int_{\Lambda^2/s}^1 \frac{dz}{z} \int_{1/zs}^{1/zQ^2} \frac{dx_{10}^2}{x_{10}^2} \int d^2\underline{b} Q(\underline{x}_1, \underline{x}_0, z), \quad (3)$$

where  $\underline{b} = \frac{\underline{x}_0 + \underline{x}_1}{2}$  and  $\underline{x}_{10} = \underline{x}_1 - \underline{x}_0$ .

Here,  $Q(\underline{x}_1, \underline{x}_0, z) \equiv Q_{10}(z)$  is the quark (longitudinally) polarized dipole amplitude.

# Quark Unpolarized Dipole Amplitude

$S_{10}(z)$  corresponds to a minus-moving quark dipole interacting with a plus-moving target proton, represented by the blue rectangle.

$$\begin{aligned}
 S_{10}(z) = & \quad \begin{array}{c} \underline{x}_0 \text{ --- } \rightarrow \text{ --- } \\ \underline{x}_1 \text{ --- } \leftarrow \text{ --- } \end{array} \quad \text{blue rectangle} \quad + \quad \begin{array}{c} \underline{x}_0 \text{ --- } \leftarrow \text{ --- } \\ \underline{x}_1 \text{ --- } \rightarrow \text{ --- } \end{array} \quad \text{blue rectangle} \\
 & = \frac{1}{2N_c} \text{Re} \left[ \left\langle \mathcal{T} \text{tr} \left[ V_{\underline{0}} V_{\underline{1}}^\dagger \right] \right\rangle (z) + \left\langle \mathcal{T} \text{tr} \left[ V_{\underline{1}} V_{\underline{0}}^\dagger \right] \right\rangle (z) \right]. \quad (4)
 \end{aligned}$$

- $V_{\underline{i}}$  is the fundamental Wilson's line at  $\underline{x}_i$ .
- The angle brackets average over target proton's wave function.

# Quark Polarized Dipole Amplitude

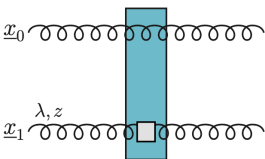
Diagrammatically,  $Q_{10}(z)$  corresponds to a quark dipole, one of which has helicity  $\sigma$ , interacting with a polarized target proton (blue rectangle).

$$\begin{aligned}
 Q_{10}(z) = & \quad \text{Diagram 1} \quad + \quad \text{Diagram 2} \\
 & = \frac{zs}{2N_c} \operatorname{Re} \left[ \left\langle \mathcal{T} \operatorname{tr} \left[ V_{\underline{0}} V_{\underline{1}}^{\text{pol} \dagger} \right] \right\rangle (z) + \left\langle \mathcal{T} \operatorname{tr} \left[ V_{\underline{1}}^{\text{pol}} V_{\underline{0}}^\dagger \right] \right\rangle (z) \right]. \quad (5)
 \end{aligned}$$

- $V_{\underline{0}}$  is the fundamental unpolarized Wilson's line at  $\underline{x}_0$ .
- $V_{\underline{1}}^{\text{pol}}$  is the fundamental *polarized Wilson's line* at  $\underline{x}_1$ .
- The angle brackets average over target proton's wave function.
- At Born level,  $Q_{10}(z) \sim 1$  because the helicity-dependent tree-level cross-section  $\sim \frac{1}{zs}$ .

# Gluon Polarized Dipole Amplitude

Similar to quark, consider a gluon dipole, one of which has helicity  $\lambda$ , interacting with a polarized target proton (blue rectangle).

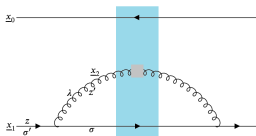
$$G_{10}(z) =$$


$$= \frac{zS}{2(N_c^2 - 1)} \text{Re} \left[ \left\langle \mathcal{T} \text{tr} \left[ U_{\underline{0}} U_{\underline{1}}^{\text{pol} \dagger} \right] \right\rangle (z) + \left\langle \mathcal{T} \text{tr} \left[ U_{\underline{1}}^{\text{pol}} U_{\underline{0}}^\dagger \right] \right\rangle (z) \right]. \quad (6)$$

- $U_{\underline{0}}$  is the adjoint unpolarized Wilson's line at  $\underline{x}_0$ .
- $U_{\underline{1}}^{\text{pol}}$  is the adjoint *polarized Wilson's line* at  $\underline{x}_1$ .
- The angle brackets average over target proton's wave function.

# Evolution

- The polarized dipole amplitudes obey integral equations resulting from quark/gluon splitting outside the target shockwave, e.g.



- To the first order in  $\alpha_s$ , both dipole amplitudes evolve as

$$\delta\langle \dots \rangle \sim \alpha_s \left[ \underbrace{\int \frac{dz'}{z'} \int \frac{dx_{21}^2}{x_{21}^2}}_{\text{Double-logarithmic}} + \underbrace{\int dz' \int \frac{dx_{32}^2}{x_{32}^2} + \int \frac{dz'}{z'} \int dx_{21}^2}_{\text{Single-logarithmic}} + \dots \right] \times (\text{dipole amplitudes}).$$

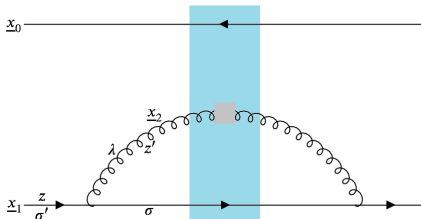
- The single-logarithmic (SLA) terms (resumming  $\alpha_s \ln \frac{1}{x}$ ) are subleading to the double-logarithmic (DLA) term (resumming  $\alpha_s \ln^2 \frac{1}{x}$ ).

# Longitudinally Soft Parton Emission

- In a splitting in the limit  $z' \ll z$ , the longitudinal  $z'$ -integral is logarithmic, giving the evolution terms

$$\alpha_s \int \frac{dz'}{z'} \left[ \underbrace{A \int \frac{dx_{21}^2}{x_{21}^2}}_{\text{DLA}} + \underbrace{B \int dx_{21}^2}_{\text{SLA}_L} \right] (\text{dipole amps}) \quad (7)$$

- $\text{SLA}_L$ : single-logarithmic term with logarithmic longitudinal integral.





# DLA Evolution Equations

With only DLA terms included, the evolution equations are [Kovchegov et al, 2016] [Kovchegov and Sievert, 2019]

$$\begin{aligned}
 \frac{1}{N_c} \left\langle \text{tr} \left[ V_{\underline{0}}^{unp} V_{\underline{1}}^{pol \dagger} \right] \right\rangle(z) &= \frac{1}{N_c} \left\langle \text{tr} \left[ V_{\underline{0}}^{unp} V_{\underline{1}}^{pol \dagger} \right] \right\rangle_0(z) + \frac{\alpha_s}{2\pi^2} \int_{z_i}^z \frac{dz'}{z'} \int_{\rho'^2} \frac{d^2 x_2}{x_{21}^2} \\
 &\times \left\{ \theta(x_{10} - x_{21}) \frac{2}{N_c} \left\langle \text{tr} \left[ t^b V_{\underline{0}}^{unp} t^a V_{\underline{1}}^{unp \dagger} \right] U_{\underline{2}}^{pol ba} \right\rangle(z') + \theta(x_{10}^2 z - x_{21}^2 z') \frac{1}{N_c} \left\langle \text{tr} \left[ t^b V_{\underline{0}}^{unp} t^a V_{\underline{2}}^{pol \dagger} \right] U_{\underline{1}}^{unp ba} \right\rangle(z') \right. \\
 &+ \left. \theta(x_{10} - x_{21}) \frac{1}{N_c} \left[ \left\langle \text{tr} \left[ V_{\underline{0}}^{unp} V_{\underline{2}}^{unp \dagger} \right] \text{tr} \left[ V_{\underline{2}}^{unp} V_{\underline{1}}^{pol \dagger} \right] \right\rangle(z') - N_c \left\langle \text{tr} \left[ V_{\underline{0}}^{unp} V_{\underline{1}}^{pol \dagger} \right] \right\rangle(z') \right] \right\}. \\
 \frac{1}{N_c^2 - 1} \left\langle \text{Tr} \left[ U_{\underline{0}}^{unp} U_{\underline{1}}^{pol \dagger} \right] \right\rangle(z) &= \frac{1}{N_c^2 - 1} \left\langle \text{Tr} \left[ U_{\underline{0}}^{unp} U_{\underline{1}}^{pol \dagger} \right] \right\rangle_0(z) + \frac{\alpha_s}{2\pi^2} \int_{z_i}^z \frac{dz'}{z'} \int_{\rho'^2} \frac{d^2 x_2}{x_{21}^2} \\
 &\times \left\{ \theta(x_{10} - x_{21}) \frac{4}{N_c^2 - 1} \left\langle \text{Tr} \left[ T^b U_{\underline{0}}^{unp} T^a U_{\underline{1}}^{unp \dagger} \right] U_{\underline{2}}^{pol ba} \right\rangle(z') \right. \\
 &- \theta(x_{10}^2 z - x_{21}^2 z') \frac{N_f}{N_c^2 - 1} \left\langle \text{tr} \left[ t^b V_{\underline{1}}^{unp} t^a V_{\underline{2}}^{pol \dagger} \right] U_{\underline{0}}^{unp ba} + \text{tr} \left[ t^b V_{\underline{2}}^{pol} t^a V_{\underline{1}}^{unp \dagger} \right] U_{\underline{0}}^{unp ba} \right\rangle(z') \\
 &+ \left. \theta(x_{10} - x_{21}) \frac{2}{N_c^2 - 1} \left[ \left\langle \text{Tr} \left[ T^b U_{\underline{0}}^{unp} T^a U_{\underline{1}}^{pol \dagger} \right] U_{\underline{2}}^{unp ba} \right\rangle(z') - N_c \left\langle \text{Tr} \left[ U_{\underline{0}}^{unp} U_{\underline{1}}^{pol \dagger} \right] \right\rangle(z') \right] \right\}
 \end{aligned}$$

where  $\langle \langle \dots \rangle \rangle = z\mathcal{S} \langle \dots \rangle$ .

# DLA Evolution Equations

- At large  $N_c$  and large  $N_c \& N_f$ , the equations become closed and linear [Kovchegov et al, 2016] [Kovchegov and Sievert, 2019].
- For example, at large  $N_c$ , the equations are:

$$G_{10}(z) = G_{10}^{(0)}(z) + \frac{\alpha_s N_c}{2\pi} \int_{\frac{1}{s x_{10}^2}}^z \frac{dz'}{z'} \int_{\frac{1}{z's}}^{x_{10}^2} \frac{dx_{21}^2}{x_{21}^2} [\Gamma_{10,21}(z') + 3 G_{21}(z')]$$

$$\Gamma_{10,21}(z') = \Gamma_{10,21}^{(0)}(z') + \frac{\alpha_s N_c}{2\pi} \int_{\min\{\Lambda^2, \frac{1}{x_{10}^2}\}/s}^{z'} \frac{dz''}{z''} \int_{\frac{1}{z''s}}^{\min\{x_{10}^2, x_{21}^2 z' / z''\}} \frac{dx_{32}^2}{x_{32}^2} [\Gamma_{10,32}(z'') + 3 G_{32}(z'')]$$

where  $\Gamma$  is an auxiliary function.

# DLA Evolution Equations

These DLA equations have been analytically solved at large  $N_c$  [Kovchegov et al, 2017] and numerically solved at large  $N_c$  &  $N_f$  [Kovchegov and Tawabutr, 2020].

- At large  $N_c$ , the quark helicity PDF has the asymptotic form

$$\Delta\Sigma(x, Q^2) \sim (1/x)^{\alpha_h^q}. \quad (8)$$

- At large  $N_c$  &  $N_f$ , the asymptotic form displays oscillation pattern

$$\Delta\Sigma(x, Q^2) \sim (1/x)^{\alpha_h^q} \cos[\omega_q \ln(1/x) + \varphi_q]. \quad (9)$$

In both cases,  $\alpha_h^q \approx \frac{4}{\sqrt{3}} \sqrt{\frac{\alpha_s N_c}{2\pi}}$ , and  $\omega_q$  is small and increases with  $N_f$ .

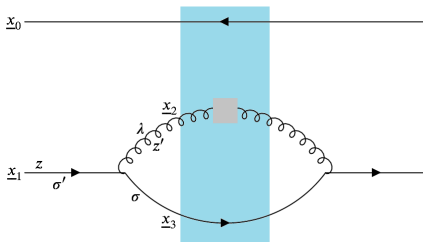
- Phenomenological implications were studied in [Adamiak et al, 2021].

## Longitudinally Hard Parton Emission

- In the limit  $z' \sim z$ , a parton splitting yields the  $\text{SLA}_T$  terms, i.e. single-logarithmic terms with logarithmic transverse integral

$$\alpha_s \int dz' \Delta P(z'/z) \int \frac{dx_{32}^2}{x_{32}^2} (\text{dipole amps}) \quad (10)$$

- Here,  $\Delta P(z'/z)$  is the polarized DGLAP splitting function.
- Since  $z' \sim (z - z') \sim z$ , neither  $\underline{x}_3$  nor  $\underline{x}_2$  is close to  $\underline{x}_1$ , but we still have  $x_{32} \ll x_{10}$ .



# SLA Evolution Equations

Including both double-log (DLA) and single-log (SLA) terms, we have

$$\begin{aligned}
 \frac{1}{N_c} \langle \text{tr} [V_0 V_1^{\text{pol} \dagger}] \rangle(z_{\min}, z_{\text{pol}}) &= \frac{1}{N_c} \langle \text{tr} [V_0 V_1^{\text{pol} \dagger}] \rangle_0(z_{\text{pol}}) + \frac{1}{2\pi^2} \int_{\Lambda^2/s} \frac{dz'}{z'} \int_{1/(z's)} d^2 x_2 \\
 &\times \left[ \left( \frac{\alpha_s(1/x_{21}^2)}{x_{21}^2} \theta(x_{10}^2 z_{\min} - x_{21}^2 z') - \alpha_s(\min(1/x_{21}^2, 1/x_{20}^2)) \frac{x_{21} \cdot x_{20}}{x_{21}^2 x_{20}^2} \theta(x_{10}^2 z_{\min} - \max\{x_{21}^2, x_{20}^2\} z') \right) \right. \\
 &\times \frac{4}{N_c^2 - 1} \langle \text{tr} [T^k U_0 T^a U_1^{\dagger}] U_2^{\text{pol} \dagger \text{ba}} \rangle(z', z') \\
 &+ \frac{\alpha_s(1/x_{21}^2)}{x_{21}^2} \theta(x_{10}^2 z_{\min} - x_{21}^2 z') \frac{1}{N_c} \langle \text{tr} [T^k V_0 t^a V_2^{\text{pol} \dagger}] U_1^{\text{ba}} \rangle(z', z') \Big] \\
 &+ \frac{1}{2\pi^2} \int_{\Lambda^2/s} \frac{dz'}{z'} \int_{1/(z's)} d^2 x_2 K_{\text{cBK}}(x_0, x_1; x_2) \theta(x_{10}^2 z_{\min} - x_{21}^2 z') \\
 &\times \frac{1}{N_c} \langle \text{tr} [V_0 V_2^{\dagger}] \text{tr} [V_2 V_1^{\text{pol} \dagger}] \rangle(z', z_{\text{pol}}) - N_c \langle \text{tr} [V_0 V_1^{\text{pol} \dagger}] \rangle(z', z_{\text{pol}}) \\
 &- \frac{1}{2\pi^2} \int_0^{z_{\text{pol}}} \frac{dz'}{z_{\text{pol}}} \int_{\frac{z_{\text{pol}}}{z'(z_{\text{pol}} - z')}} \frac{d^2 x_{32}}{x_{32}^2} \theta(x_{10}^2 z_{\min} z_{\text{pol}} - x_{32}^2 z'(z_{\text{pol}} - z')) \alpha_s \left( \frac{1}{x_{32}^2} \right) \\
 &\times \left[ \frac{1}{N_c} \langle \text{tr} [t^k V_0 t^a V_1^{\text{pol} \dagger}] U_2^{\text{pol} \dagger \text{ba}} \rangle_{x_1 + (1 - \frac{z'}{z_{\text{pol}}}) E_{32}} (\min\{z_{\min}, z', z_{\text{pol}} - z'\}, z') \right. \\
 &+ \frac{1}{N_c} \langle \text{tr} [t^k V_0 t^a V_2^{\text{pol} \dagger}] U_1^{\text{ba}} \rangle_{x_1 + (1 - \frac{z'}{z_{\text{pol}}}) E_{32}} (\min\{z_{\min}, z', z_{\text{pol}} - z'\}, z') \Big] \\
 &+ \frac{C_F}{2\pi^2} \int_0^{z_{\text{pol}}} \frac{dz'}{z_{\text{pol}}} \left( 1 + \frac{z'}{z_{\text{pol}}} \right) \int_{\frac{z_{\text{pol}}}{z'(z_{\text{pol}} - z')}} \frac{d^2 x_{32}}{x_{32}^2} \theta(x_{10}^2 z_{\min} z_{\text{pol}} - x_{32}^2 z'(z_{\text{pol}} - z')) \alpha_s \left( \frac{1}{x_{32}^2} \right) \\
 &\times \frac{1}{N_c} \langle \text{tr} [V_0 V_1^{\text{pol} \dagger}] \rangle(\min\{z_{\min}, z', z_{\text{pol}} - z'\}, z_{\text{pol}}).
 \end{aligned}$$

$$\begin{aligned}
 \frac{1}{N_c^2 - 1} \langle \text{tr} [U_0 U_1^{\text{pol} \dagger}] \rangle(z_{\min}, z_{\text{pol}}) &= \frac{1}{N_c^2 - 1} \langle \text{tr} [U_0 U_1^{\text{pol} \dagger}] \rangle_0(z_{\text{pol}}) + \frac{1}{2\pi^2} \int_{\Lambda^2/s} \frac{dz'}{z'} \int_{1/(z's)} d^2 x_2 \\
 &\times \left[ \left( \frac{\alpha_s(1/x_{21}^2)}{x_{21}^2} \theta(x_{10}^2 z_{\min} - x_{21}^2 z') - \alpha_s(\min(1/x_{21}^2, 1/x_{20}^2)) \frac{x_{21} \cdot x_{20}}{x_{21}^2 x_{20}^2} \theta(x_{10}^2 z_{\min} - \max\{x_{21}^2, x_{20}^2\} z') \right) \right. \\
 &\times \frac{4}{N_c^2 - 1} \langle \text{tr} [T^k U_0 T^a U_1^{\dagger}] U_2^{\text{pol} \dagger \text{ba}} \rangle(z', z') \\
 &- \frac{\alpha_s(1/x_{21}^2)}{x_{21}^2} \theta(x_{10}^2 z_{\min} - x_{21}^2 z') \frac{N_f}{N_c^2 - 1} \langle \text{tr} [t^k V_1 t^a V_2^{\text{pol} \dagger}] U_0^{\text{ba}} + \text{tr} [t^k V_2^{\text{pol} \dagger} t^a V_1^{\dagger}] U_0^{\text{ba}} \rangle(z', z') \Big] \\
 &+ \frac{1}{\pi^2} \int_{\Lambda^2/s} \frac{dz'}{z'} \int_{1/(z's)} d^2 x_2 K_{\text{cBK}}(x_0, x_1; x_2) \theta(x_{10}^2 z_{\min} - x_{21}^2 z') \\
 &\times \frac{1}{N_c^2 - 1} \langle \text{tr} [T^k U_0 T^a U_1^{\text{pol} \dagger}] U_2^{\text{ba}} \rangle(z', z_{\text{pol}}) - N_c \langle \text{tr} [U_0 U_1^{\text{pol} \dagger}] \rangle(z', z_{\text{pol}}) \\
 &- \frac{1}{2\pi^2} \int_0^{z_{\text{pol}}} \frac{dz'}{z_{\text{pol}}} \int_{\frac{z_{\text{pol}}}{z'(z_{\text{pol}} - z')}} \frac{d^2 x_{32}}{x_{32}^2} \theta(x_{10}^2 z_{\min} z_{\text{pol}} - x_{32}^2 z'(z_{\text{pol}} - z')) \alpha_s \left( \frac{1}{x_{32}^2} \right) \\
 &\times \frac{4}{N_c^2 - 1} \langle \text{tr} [T^k U_0 T^a U_1^{\text{pol} \dagger}] U_2^{\text{pol} \dagger \text{ba}} \rangle_{x_1 + (1 - \frac{z'}{z_{\text{pol}}}) E_{32}} (\min\{z_{\min}, z', z_{\text{pol}} - z'\}, z') \\
 &+ \frac{1}{\pi^2} \int_0^{z_{\text{pol}}} \frac{dz'}{z_{\text{pol}}} \int_{\frac{z_{\text{pol}}}{z'(z_{\text{pol}} - z')}} \frac{d^2 x_{32}}{x_{32}^2} \theta(x_{10}^2 z_{\min} z_{\text{pol}} - x_{32}^2 z'(z_{\text{pol}} - z')) \alpha_s \left( \frac{1}{x_{32}^2} \right) \frac{N_f}{N_c^2 - 1} \\
 &\times \langle \text{tr} [t^k V_1 t^a V_2^{\text{pol} \dagger}] U_0^{\text{ba}} \rangle_{x_1 + (1 - \frac{z'}{z_{\text{pol}}}) E_{32}} (\min\{z_{\min}, z', z_{\text{pol}} - z'\}, z') \\
 &+ \text{tr} [t^k V_2^{\text{pol} \dagger} t^a V_1^{\text{pol} \dagger}] U_0^{\text{ba}} (\min\{z_{\min}, z', z_{\text{pol}} - z'\}, z') \\
 &+ \frac{1}{2\pi^2} \int_0^{z_{\text{pol}}} \frac{dz'}{z_{\text{pol}}} \int_{\frac{z_{\text{pol}}}{z'(z_{\text{pol}} - z')}} \frac{d^2 x_{32}}{x_{32}^2} \left[ N_c \left( 2 - \frac{z'}{z_{\text{pol}}} + \frac{z^2}{z_{\text{pol}}^2} \right) - \frac{N_f}{2} \left( \frac{z^2}{z_{\text{pol}}^2} + \left( 1 - \frac{z'}{z_{\text{pol}}} \right)^2 \right) \right] \\
 &\times \theta(x_{10}^2 z_{\min} z_{\text{pol}} - x_{32}^2 z'(z_{\text{pol}} - z')) \alpha_s \left( \frac{1}{x_{32}^2} \right) \frac{1}{N_c^2 - 1} \langle \text{tr} [U_0 U_1^{\text{pol} \dagger}] \rangle(\min\{z_{\min}, z', z_{\text{pol}} - z'\}, z_{\text{pol}}).
 \end{aligned}$$

- SLA<sub>T</sub> terms are written in blue.
- The running coupling correction is SLA and also has to be included.

# SLA Evolution Equations

Including both double-log (DLA) and single-log (SLA) terms, we have

$$\begin{aligned}
 \frac{1}{N_c} \left\langle \left\langle \text{tr} \left[ V_0 V_1^{\text{pol} \dagger} \right] \right\rangle \right\rangle (z_{\min}, z_{\text{pol}}) &= \frac{1}{N_c} \left\langle \left\langle \text{tr} \left[ V_0 V_1^{\text{pol} \dagger} \right] \right\rangle \right\rangle_0 (z_{\text{pol}}) + \frac{1}{2\pi^2} \int_{\Lambda^2/s}^{z_{\min}} \frac{dz'}{z'} \int_{1/(z's)} d^2 x_2 \\
 &\times \left[ \left( \frac{\alpha_s(1/x_{21}^2)}{x_{21}^2} \theta(x_{10}^2 z_{\min} - x_{21}^2 z') - \alpha_s(\min\{1/x_{21}^2, 1/x_{20}^2\}) \frac{x_{21} \cdot x_{20}}{x_{21}^2 x_{20}^2} \theta(x_{10}^2 z_{\min} - \max\{x_{21}^2, x_{20}^2\} z') \right) \right. \\
 &\times \frac{2}{N_c} \left\langle \left\langle \text{tr} \left[ t^b V_0 t^a V_1^\dagger \right] U_2^{\text{pol} \text{ ba}} \right\rangle \right\rangle (z', z') \\
 &+ \frac{\alpha_s(1/x_{21}^2)}{x_{21}^2} \theta(x_{10}^2 z_{\min} - x_{21}^2 z') \frac{1}{N_c} \left\langle \left\langle \text{tr} \left[ t^b V_0 t^a V_2^{\text{pol} \dagger} \right] U_1^{\text{ba}} \right\rangle \right\rangle (z', z') \Big] \\
 &+ \frac{1}{2\pi^2} \int_{\Lambda^2/s}^{z_{\min}} \frac{dz'}{z'} \int_{1/(z's)} d^2 x_2 K_{\text{rcBK}}(\underline{x}_0, \underline{x}_1; \underline{x}_2) \theta(x_{10}^2 z_{\min} - x_{21}^2 z') \\
 &\times \frac{1}{N_c} \left[ \left\langle \left\langle \text{tr} \left[ V_0 V_2^\dagger \right] \text{tr} \left[ V_2 V_1^{\text{pol} \dagger} \right] \right\rangle \right\rangle (z', z_{\text{pol}}) - N_c \left\langle \left\langle \text{tr} \left[ V_0 V_1^{\text{pol} \dagger} \right] \right\rangle \right\rangle (z', z_{\text{pol}}) \right] \\
 &- \frac{1}{2\pi^2} \int_0^{z_{\text{pol}}} \frac{dz'}{z_{\text{pol}}} \int_{\frac{x_{\text{pol}}}{z'(z_{\text{pol}} - z')s}} \frac{d^2 x_{32}}{x_{32}^2} \theta(x_{10}^2 z_{\min} z_{\text{pol}} - x_{32}^2 z'(z_{\text{pol}} - z')) \alpha_s \left( \frac{1}{x_{32}^2} \right) \\
 &\times \left[ \frac{1}{N_c} \left\langle \left\langle \text{tr} \left[ t^b V_0 t^a V_1^\dagger \right]_{\underline{\varepsilon}_1 - \frac{z'}{z_{\text{pol}}} \underline{\varepsilon}_{32}} U_1^{\text{pol} \text{ ba}} \right\rangle \right\rangle (\min\{z_{\min}, z', z_{\text{pol}} - z'\}, z') \right. \\
 &+ \frac{1}{N_c} \left\langle \left\langle \text{tr} \left[ t^b V_0 t^a V_2^{\text{pol} \dagger} \right]_{\underline{\varepsilon}_1 + (1 - \frac{z'}{z_{\text{pol}}}) \underline{\varepsilon}_{32}} U_1^{\text{ba}} \right\rangle \right\rangle (\min\{z_{\min}, z', z_{\text{pol}} - z'\}, z') \Big] \\
 &+ \frac{C_F}{2\pi^2} \int_0^{z_{\text{pol}}} \frac{dz'}{z_{\text{pol}}} \left( 1 + \frac{z'}{z_{\text{pol}}} \right) \int_{\frac{x_{\text{pol}}}{z'(z_{\text{pol}} - z')s}} \frac{d^2 x_{32}}{x_{32}^2} \theta(x_{10}^2 z_{\min} z_{\text{pol}} - x_{32}^2 z'(z_{\text{pol}} - z')) \alpha_s \left( \frac{1}{x_{32}^2} \right) \\
 &\times \frac{1}{N_c} \left\langle \left\langle \text{tr} \left[ V_0 V_1^{\text{pol} \dagger} \right] \right\rangle \right\rangle (\min\{z_{\min}, z', z_{\text{pol}} - z'\}, z_{\text{pol}}).
 \end{aligned}$$

- $\text{SLA}_T$  terms are written in **blue**.
- The running coupling correction is SLA and also has to be included.

# SLA Evolution Equations

- At large  $N_c$  and large  $N_c \& N_f$ , the equations become closed but *non-linear* because the evolution of unpolarized dipoles are also SLA.
- For example, at large  $N_c$ , (half of) the equations are:

$$\begin{aligned}
 G_{10}(z_{\min}, z_{\text{pol}}) = & G_{10}^{(0)}(z_{\text{pol}}) + \frac{N_c}{\pi^2} \int_{\Lambda^2/s}^{z_{\min}} \frac{dz'}{z'} \int_{1/(z's)} d^2x_2 \\
 & \times \left( \frac{\alpha_s(1/x_{21}^2)}{x_{21}^2} \theta(x_{10}^2 z_{\min} - x_{21}^2 z') - \alpha_s(\min\{1/x_{21}^2, 1/x_{20}^2\}) \frac{x_{21} \cdot x_{20}}{x_{21}^2 x_{20}^2} \theta(x_{10}^2 z_{\min} - \max\{x_{21}^2, x_{20}^2\} z') \right) \\
 & \times [G_{21}(z', z') S_{20}(z') + \Gamma_{20,21}^{gen}(z', z') S_{21}(z')] \\
 + & \frac{N_c}{2\pi^2} \int_{\Lambda^2/s}^{z_{\min}} \frac{dz'}{z'} \int_{1/z's} d^2x_2 K_{\text{rcBK}}(\underline{x}_0, \underline{x}_1; \underline{x}_2) \theta(x_{10}^2 z_{\min} - x_{21}^2 z') \left[ G_{21}(z', z_{\text{pol}}) S_{20}(z') - \Gamma_{10,21}^{gen}(z', z_{\text{pol}}) \right] \\
 - & \frac{N_c}{\pi^2} \int_0^{z_{\text{pol}}} \frac{dz'}{z_{\text{pol}}} \int_{\frac{z_{\text{pol}}}{z'(z_{\text{pol}}-z')s}} \frac{d^2x_{32}}{x_{32}^2} \alpha_s \left( \frac{1}{x_{32}^2} \right) \theta(x_{10}^2 z_{\min} z_{\text{pol}} - x_{32}^2 z'(z_{\text{pol}} - z')) \\
 & \times \left[ G_{\underline{x}_1 + (1 - \frac{z'}{z_{\text{pol}}}) \underline{x}_{32}, \underline{x}_1 - \frac{z'}{z_{\text{pol}}} \underline{x}_{32}}(z_{\min}, z') S_{10}(z_{\min}) + \Gamma_{10,32}(z_{\min}, z') \right] \\
 + & \frac{N_c}{2\pi^2} \int_0^{z_{\text{pol}}} \frac{dz'}{z_{\text{pol}}} \left( 2 - \frac{z'}{z_{\text{pol}}} + \frac{z'^2}{z_{\text{pol}}^2} \right) \int_{\frac{z_{\text{pol}}}{z'(z_{\text{pol}}-z')s}} \frac{d^2x_{32}}{x_{32}^2} \alpha_s \left( \frac{1}{x_{32}^2} \right) \theta(x_{10}^2 z_{\min} z_{\text{pol}} - x_{32}^2 z'(z_{\text{pol}} - z')) \\
 & \times \Gamma_{10,32}(z_{\min}, z_{\text{pol}}).
 \end{aligned}$$

- Quark's helicity contribution to proton spin follows evolution equations that contain leading DLA terms and subleading SLA terms.
- The SLA terms have been derived, with the effects of running coupling included, as the latter is also single-logarithmic.
- In the large- $N_c$  and large- $N_c \& N_f$  limits, the equations are closed but non-linear, since the unpolarized evolution is single-logarithmic.
- Future work:
  - Connection to the polarized DGLAP evolution
  - Numerical solutions to the SLA evolution equations at large  $N_c$  and large  $N_c \& N_f$
  - Phenomenological implications



# The End

# References



R. L. Jaffe and A. Manohar (1990)

The  $g_1$  problem: Deep inelastic electron scattering and the spin of the proton  
*Nucl. Phys. B* 337, 509



Y. V. Kovchegov and H. Weigert (2007)

Triumvirate of Running Couplings in Small- $x$  Evolution  
*Nucl. Phys. A* 784, 188–226.



I. Balitsky (2007)

Quark contribution to the small- $x$  evolution of color dipole  
*Phys. Rev. D* 75, 014001.



Y. V. Kovchegov, D. Pitonyak and M. D. Sievert (2016)

Helicity Evolution at Small- $x$   
*JHEP* 1601, 072; *JHEP* 1610, 148.



Y. V. Kovchegov, D. Pitonyak and M. D. Sievert (2017)

Small- $x$  Asymptotics of the Quark Helicity Distribution: Analytic Results  
*Phys. Lett. B* 772, 136–140.



Y. V. Kovchegov and M. D. Sievert (2019)

Small- $x$  Helicity Evolution: an Operator Treatment  
*Phys. Rev. D* 5, 054032.



Y. V. Kovchegov and Y. Tawabutr (2020)

Helicity at Small  $x$ : Oscillations Generated by Bringing Back the Quarks  
*JHEP* 2008, 014.

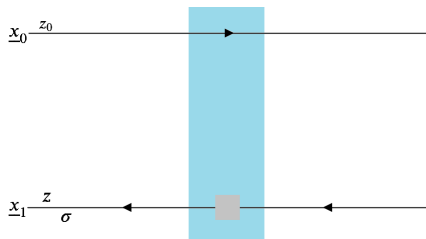


D. Adamiak, Y. Kovchegov, W. Melnitchouk, D. Pitonyak, N. Sato and M. Sievert (2021)

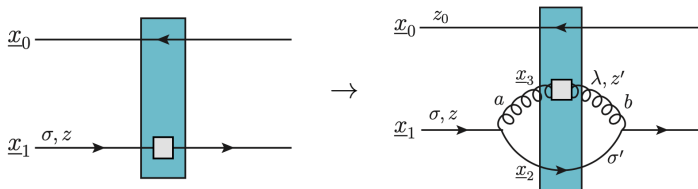
First analysis of world polarized DIS data with small- $x$  helicity evolution  
hep-ph/2102.06159.

The polarized dipole amplitudes depend on two momentum fractions.

$$\left\langle \text{tr} \left[ V_{\underline{x}_0} V_{\underline{x}_1}^\dagger(\sigma) \right] \right\rangle(z) \Rightarrow \left\langle \text{tr} \left[ V_{\underline{x}_0} V_{\underline{x}_1}^\dagger(\sigma) \right] \right\rangle \left( \underbrace{\min\{z, z_0\}}_{\text{minimum}}, \underbrace{z}_{\text{polarized}} \right)$$



# SLA Evolution Equations



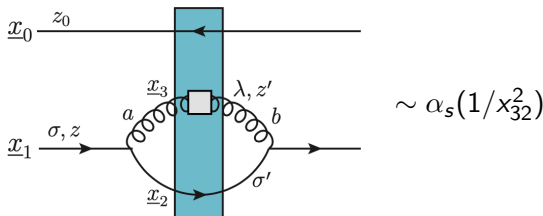
Include not only the terms coming from the splitting of the polarized line.

- Since the evolutions of both polarized and unpolarized lines are SLA, they have to be included.
- The running coupling correction is SLA and also has to be included.

At SLA, the evolution of the dipole amplitude depends on momentum fractions of two lines – the polarized line and the softest-parton line.

## Running Coupling

- For soft unpolarized parton emission, the strong coupling constant runs the same way as the unpolarized BK evolution [Kovchegov and Weigert, 2007] [Balitsky, 2007]
- For other splitting terms, i.e. soft polarized or hard parton emission, the strong coupling constant runs with the transverse size of the daughter dipole, e.g.



With this prescription, there is no double counting with the  $\text{SLA}_T$  terms.